

**SPRING**

Lawn & Garden



JOHN DEERE



SYDENSTRICKER  
NOBBE

UNION LOCATION **NOW OPEN**

GRAND OPENING EVENT  
**MAY 1st**

**\$500 DISCOUNT**  
ON ANY 1-5 SERIES TRACTOR

MUST ATTEND EVENT TO RECEIVE DISCOUNT. SOME RESTRICTIONS APPLY. SEE DEALER FOR DETAILS.

**COMPACT TRACTOR HEADQUARTERS**



**UNION**  
1311 OLD US HWY 50E  
UNION, MO 63084  
636-888-0390

SNPartners.com

**FREE - TAKE ONE**

**FREE - TAKE ONE**

**FREE - TAKE ONE**

**Ad Tracker**

573-736-2226 ~ A Weekly Advertiser ~ www.adtrackermo.com

Vol. 47 No. 15

P.O. Box 37 Crocker, MO 65452

April 15, 2021

**BIGGEST SALE OF THE YEAR**

**SPRING SALES EVENT**

TimeCutter® MX5000  
model 75750 • MSRP \$3,299

**\$3,099**

- 23 hp Kohler engine
- 50" fabricated deck
- 18" handcrafted seat



TimeCutter® MX5400  
model 75754 • MSRP \$4,099

**\$3,899**

- 24.5 hp Toro engine
- 54" fabricated deck
- 18" handcrafted seat

Both mowers come with a 3-Year,  
Unlimited Hour Residential Warranty



**COUNT ON IT.**

www.toro.com

*Before you buy a mower ask yourself, who will service it?*

**We Stand Behind Every Mower We Sell with Parts & Service You Can Trust**

**Rosebud Tractor & Equipment Company**  
241 Hwy. 50  
Rosebud, MO 63091  
573-764-3393



**RTE of Linn**  
1325 Main Street  
Linn, MO 65051  
573-897-2249

\*In stock mowers only for this special sale. Spring sales event valid through 4/30/21

www.RosebudTractor.com



**LADIES  
WEEKLY  
RECIPE**

**SOUTHERN  
SKILLET CORN**

3 C. corn kernels, cut fresh from cob (can use frozen)  
1/2 tsp. salt  
1/4 tsp. pepper  
1 Tbsp. sugar  
1/4 C. butter  
1/2 C. water  
1 Tbsp. flour  
1/4 C. milk

Combine corn, salt, pepper, sugar, butter and water in a 10-inch skillet. Cover and simmer 15 minutes on medium heat, stirring occasionally. Combine flour with milk, blending until smooth. Stir into corn. Cook five more minutes, stirring constantly.

**THE AD TRACKER CAN BE PICKED UP IN THE FOLLOWING TOWNS.**  
Anutt - Apache Flats - Argyle - Ava - Barnett - Bay - Beaufort - Belle - Bland - Bourbon - Brazito - Brinktown - Brumley - Buckhorn - Buffalo - Cabool - California - Cambellton - Camdenton - Cedar City - Centertown - Chamolis - Conway - Crocker - Cuba - Devils Elbow - Dixon - Dogpatch Corner - Doolittle - Dove - Drake - Dutrow - Edgar Springs - Eldon - Eldridge - Eterville - Eugene - Fair Grove - Flat - Freeburg - Freedom - Gasconade - Gerald - Gravois Mills - Greenview - Groves Springs - Hartsville - Henley - Hermann - High Point - Holts Summit - Houston - Hurricane Deck - Iberia - Jefferson City - Jerome - Koeltztown - Krakow - Lake Ozark - Laquey - Laurie - Leasburg - Lebanon - Lecoma - Leslie - Licking - Linn - Linn Creek - Lohman - Loose Creek - Loutre Jct. - Lyon - Mansfield - Marshfield - Marys Home - Marthasville - Meta - Montreal - Morgan - Morrison - Mt. Grove - Mt. Pleasant - Mt. Sterling - Newburg - New Haven - Northshore - Northwye - Olean - Osage Beach - Owensville - Phillipsburg - Preston - Rich Fountain - Richland - Roby - Rocky Mt - Rolla - Rosati - Rosebud - Russellville - St. Anthony - St. Clair - St. Elizabeth - St. James - St. Martins - St. Thomas - St. Robert - Salem - Seymour - Sherrill - Sleeper - Stanton - Steelville - Stoutland - Stover - Sullivan - Sunrise Beach - Swedeberg - Swiss - Taos - Tipton - Tunas - Tusculumbia - Ulman - Union - Urbana - Versailles - Vichy - Vienna - Wardsville - Washington - Waynesville - Westphalia

To place an advertisement, stop by the office #100Tracker Plaza Crocker, MO., Monday - Friday, 8a.m. - 5 p.m. or just call 573-736-2226. You can mail an ad to the Ad Tracker, P.O. Box 37, Crocker, MO. 65452. Check our coupon page for details. Ad Tracker is FREE at your favorite grocery store, restaurant, feed store, liquor store, donut shop, or other location in over 120 towns. Ad Tracker is an advertising paper for many purposes. Ad Tracker and/or its employees do not necessarily encourage participation in (or support of) advertisements such as religious, political, etc.; we are not liable for the claims or opinions expressed and paid for by our advertising customers in ANY of our issues, and reserve the right to accept or reject any ads submitted for printing. Ad Tracker is not a lending institution and reserves the right to define basis for and/or determine whether or not to extend credit.

**AD TRACKER:** is an advertising magazine for many purposes. Ad Tracker and/or its employees do not necessarily encourage participation in (or support of) advertisements such as religious, political, etc.; we are not responsible for ad validity and we are not liable for the claims or opinions expressed and paid for by our advertising customers in ANY of our printings and reserve the right to accept or reject any ads submitted for printing.

**AD TRACKER 573-736-2226**  
**RANGER TRUCKS AND TRUCK PARTS:** We buy & sell Rangers, Escapes, Focuses and related. (573)793-2699.  
**PIPE & SUCKER ROD & CUT POST:** Different sizes. (573)578-2687/ (573)422-3735.

**WE Set The Standard FOR FENCE - FENCE - FENCE**

**Great Service - Quality Work**  
We Sell And Install

- Chain Link (All Types And Sizes)
- Wood Privacy - Vinyl Fence (All Types)
- Aluminum Fence Many Styles

Prices Are On The Increase - Call NOW To SAVE!

**FISHER CUSTOM FENCE**  
Dennis 573-284-5356 • Brady 573-338-3114  
Serving Central Missouri For 20 Years

**DAVIS BOAT REPAIR:** Custom aluminum boat repair, jet parts and repair. Dixon. (573)759-6153.  
**WE BUY "JUNK" CARS & TRUCKS:** Call SORRELL'S AUTO & TRUCK PARTS. (573)445-4451. Columbia.



**JOHN DEERE R DIESEL TRACTOR:** Pony Motor, Overhauled, Tested, 57 HP, 90% Rubber, Wts, Restored, \$7,500. Call (573)881-3557. **B14**

**USED PIPE FOR SALE:** 1", 2", 2 1/2", 3", 4", 7" in stock. Call 8-5, (573)369-2438. Tusculumbia.  
**40' STORAGE TRAILERS & CONTAINERS:** for rent. Delivery extra. (636)583-8077. Union.

**GREEN SMALL ENGINE AND AG REPAIR**

- ◆ Chainsaws
- ◆ Lawnmowers
- ◆ ATVs/UTVs
- ◆ Tractors
- ◆ Balers
- ◆ and MORE

**Green Small Engine and Ag Repair**  
2020 Vienna Rolla Road  
Vienna, Missouri | 573-466-7553

**BUYING & SELLING:** Used mobile homes, move and set-up available. For inventory or to sell us your home call (636)583-8686 or visit www.eastcentralmoilehomes.com  
**COMMERCIAL TRUCK INSURANCE:** Competitive Rates, specializing in long haul, dump trucks, log trucks and delivery. Call 800-216-3377 for professional service.

**American Made Metal Roofing**

**40 Year Warranty Metal** .....\$2.69/LF (\$84.06 Per Sq.)

\* 29 Gauge 10 Year.....(\$2.49/LF (\$77.81 Per Sq.)

**\*\*While Supplies Last\*\***  
29 Gauge #1 Galvalume....\$1.99/LF (\$62.19 Per Sq.)  
26 Gauge 40 Year (Warranty Metal)....\$3.49/LF (\$109.06 Per Sq.)

**Building In A Box**  
Stud Wall & Pole Barn Kits

- 24x30x8 - \$6,085.00
- 30x40x10 - \$8,850.00
- 30x60x10 - \$11,890.00
- 30x60x12 - \$12,320.00
- 95 % Precut

Material Surcharges May Also Apply

★ 17 Colors To Choose From  
★ 20 Years In Business  
★ We Manufacture Our Own Metal and Trusses

**3 Locations To Serve You!**

202 S. Prigmor Ave Joplin, MO 417-553-8697	1100 Pace Rd. Pocahontas, AR. 870-609-1900	35 Killdeer Rd. Seymour, Mo. 417-952-7143
--	--	---

\*possibly not American made Prices Always Subject To Change.

**FANNING FEED**

5957 Hwy. ZZ, Cuba, MO 65453 • 573-885-0787  
8 a.m. - 6 p.m. Monday - Friday • 8 a.m. - 3 p.m. Saturday

<p>50 Lb Bag Stocker Grower Medicated NO VFD Required <b>\$7.99</b></p>	<p>50 Lb Bag Ranch Hand 20% Cube <b>\$7.99</b> \$299.60 Per Ton</p>	<p><b>PURINA</b> 50 Lb Bag High Mag <b>\$20.00 Bag</b> <b>\$720. Ton</b></p>
<p><b>PURINA</b> 50 Lb Bag All Season Wind &amp; Rain <b>\$23.00</b></p>	<p><b>PURINA</b> Rangeland 30-13 Protein Tub 225 Lb <b>\$89.50</b></p>	<p><b>VitaFerm Concept-Aid</b> <b>\$32.49 Per Bag</b> Pallet Of 50/50 Lb Bags <b>\$1,549.95</b></p>

PURINA EXCLUSIVE RED SPORTMAX Bluebonnet Feeds Taste of the Wild YETI Diamond infinia VitaFerm Concept-Aid

**FOR SALE:** Quality performance Angus & Simi-Angus bulls. Semen tested, breeding soundness, satisfaction guaranteed. Bulls suitable for heifers for calving ease. Free delivery by May 20th. Call for details (573)680-9117 cell, (573)437-3751, (573)437-2507. Bland.

**TUFFY SPECIAL:** Volume prices. (573)657-2176. amegamobilehome.com

**OPEN LIM-FLEX HEIFERS:** 700 weights. (573)694-0164.

**FOR SALE:** 3 bedroom., new metal roof, furnace & carport. Deck, fenced. Rolla, MO. 1307 Maple. \$60,000. (573)308-5469.

**FOR SALE:** Church pews, color honey oak, good condition, 10' 1/2" Long. If interested call (314)240-3096. Licking, Mo.

**Zimmerman's Produce**

**HANGING BASKETS FOR MOTHER'S DAY!**  
Bedding Plants • Vegetable & Herb Plants  
Variety Planters • Hanging Baskets • Roses • Perennials  
Fresh Eggs • Local Grown Tomatoes

Location 2-1/2 Miles North At The 5 & 52 Jct.  
Right On Hwy. 5 North Of Versailles.  
**Open Daylight To Dusk (Closed Sunday)**  
**13874 Hwy. 5 • Versailles**  
**573-378-6442**

**WISDOM VALLEY FARMS**

**NON-GMO - ALL NATURAL GROWN BEEF**

1/4 • 1/2 • Up To Whole Beef Available 25-30 lbs \$150 Share

**Taking Orders For Spring Pick Up**  
**Call For Details**

Flowers & Vegetable Plants, Fresh Fruits & Vegetables (In Season)  
Tuesday-Saturday Sunrise Until Sunset  
3896 Wisdom Drive (Off Hwy O) • California, MO 65018  
**573-796-3012 Ext 3**

**WANTED:** Horses, saddles, tack, horse trailers. (314)808-4576 or (314)570-2639. K41TFN

**LOG SIDING:** 2 x 8 Pine/Wester Cedar. pineridgerustic.com (573)729-7226. Salem.



**I BUY:** Used mobile homes. Call or text (573)338-6250 or email GregS.CDH@outlook.com

**FOR SALE:** Chicks, hatching eggs, chickens, ducks, geese. Call Lee 1-314-240-3096. Licking, Mo.

**TRAILERS:** CUSTOM built! Since 1993. STILLWATER. Stanton. (573)927-5600. www.stillwatertrailers.com

**HAY FOR Sale:** 4x5 Round Bales, Good Quality Grass And Clover. 417-345-6813 Or 417-446-2070.

<p><b>Senior Discount</b> Buy 1 Sandwich Get 1 FREE Valid April 14-20 Must Bring Coupon</p>	 <b>DUTCH COUNTRY STORE LLC.</b>	<p><b>5 Lb Russet Potatoes</b> <b>\$1.99 Ea</b></p>
<p>5 Miles East of Versailles off Hwy C on Kelsay Road Watch for Signs • 573-378-4395 • We Accept EBT Cards Monday-Saturday 8 a.m.- 5 p.m. • Friday 8 a.m.- 6 p.m. • Closed Sunday</p>		

<p><b>Oscar Mayer Weiners</b> <b>SALE 99¢ 16 Oz.</b> Reg. \$1.09</p>	<p><b>Party Pizza</b> <b>\$1.50 Ea 10.9 Oz.</b></p> <p><b>Sliced Wright Bacon</b> <b>\$4.99 Ea 1 1/2 Lb</b></p>	<p><b>Cains Kosher Dill Chips</b> Reg. \$1.99 SALE \$1.49 Lb 22 Oz.</p> <p><b>Sliced 5 Lb American Cheese</b> <b>SALE \$7.99 Ea</b> Case Of 4 \$7.49 Ea Reg. \$9.50 Ea</p>
<p><b>Sliced &amp; Shaped Philly Style Beef Slices \$2.49 Lb</b></p>	<p><b>Need Plants? We Got Some Hanging Baskets, Bedding Plants, Flowers</b></p>	

**DELI** Prices Good - April 14-20, 2021

Pork Picnic Roll - \$4.25 Lb.....	Sale \$3.75 Lb
Smoked Swiss - Reg. \$5.25 Lb.....	Sale \$4.25 Lb
Brown Sugar Ham - Reg. \$4.75 Lb.....	Sale \$3.75 Lb

**FOR SALE:** 10,000 Lb Fifth wheel hitch with all of the hardware, \$300. Small table saw, 16" portable. \$75.00. (573)480-3538.

**CROSS BRED Dairy Dispersal:** Bred For Cheese And Cream Yield, Many Family Milk Cow Options, \$1,000. 660-458-6747.

**FOR SALE:** 2000 Chevy 3500 HD, 11-1/2' steel flatbed, 454 5 spd., noise in engine, \$3000. Will part out. No text please. (314)960-7759.

**1ST CUTTING ALFALFA/ORCHARD GRASS MIX:** 80/20, 19.6 protein, 55 lb. bales, \$6, delivery available. Call (573)881-3557.

**EZ HAUL**  
For All Your Hay Hauling Needs!

Like Us On facebook 



36 Ft. - \$4,922 • 32 Ft. - \$4,822

**JIM'S TRAILERS** *Motors*  
I-44 at Exit 208 • Cuba, MO  
www.jimsmotors.com  
GREAT SERVICE!  
1957-2018 GREAT PRICES!  
(573) 885-2595  
(800) 897-9840

**DREAM HOUSE:** Online, chateauhomes.net. Call Marla (573)657-7040.

**MAY LOGGING:** We buy standing timber. (573)247-9710.



**FOR SALE:** Gotway MSuper X Electric Unicycle, 84 Volts, 1600 Watts, Speed 35 MPG, 50 Mile Range On One Charge, Max Weight 260 Lbs. \$1,000. Call (573)502-3566.

B15

# LS TRACTOR

 <p style="text-align: center;"><b>MT122H</b></p> <ul style="list-style-type: none"> <li>• 22 HP</li> <li>• 17.2 PTO HP TRANS - 2 Range HST</li> <li>• 3 Pt. Lift Cap 970 Lbs</li> <li>• Ldr Lift Cap 886 Lbs</li> </ul> <p style="text-align: center;">Tractor &amp; Loader - \$11,950 Tractor, Loader &amp; Backhoe - \$15,350 Tractor, Loader, Mower - \$14,150 <b>PACKAGE DEAL - 12' Trailer, 5' Blade For Additional \$1,500</b></p>	 <p style="text-align: center;"><b>XU6168</b></p> <ul style="list-style-type: none"> <li>• 68 HP • Shuttle Shift</li> <li>• 3 Sets Of Remotes</li> <li>• Large Ag Tires</li> </ul> <p style="text-align: center;"><b>\$32,750</b></p> <p style="text-align: center;"><b>PACKAGE DEAL - 7' Brush Hog, Double Bale Spike And 20' Trailer W/ 10k Axles \$39,995</b></p>	 <p style="text-align: center;"><b>MT347H</b></p> <ul style="list-style-type: none"> <li>• 47 HP</li> <li>• Hydrostatic Transmission</li> <li>• Fold Over ROPs</li> <li>• Industrial Tires</li> <li>• 2,680 Lb Lift Capacity</li> </ul> <p style="text-align: center;"><b>\$26,500</b></p> <p style="text-align: center;"><b>PACKAGE DEAL - 6' Brush Hog, 6' Boxblade, 18' Trailer - \$31,100</b></p>
 <p style="text-align: center;"><b>MT573C</b></p> <ul style="list-style-type: none"> <li>• 74 HP • 4WD • Cab W/ AC, Heat &amp; Radio</li> <li>• Shuttle Shift, 3 Sets Of Remotes</li> </ul> <p style="text-align: center;"><b>\$42,500</b></p> <p style="text-align: center;"><b>PACKAGE DEAL - 7' Brush Hog, Double Bale Spike W/ 20' Trailer W/ 10k Axles - \$49,950</b></p>	 <p style="text-align: center;"><b>XU6158C</b></p> <ul style="list-style-type: none"> <li>• 58 HP • 4WD</li> <li>• Shuttle Shift Transmission</li> <li>• Cab w/ AC • Heat &amp; Radio</li> <li>• Large AG Tires</li> </ul> <p style="text-align: center;"><b>\$35,500</b></p> <p style="text-align: center;"><b>PACKAGE DEAL - 7' Brush Hog, 20' Trailer, 10K Axles - \$41,500</b></p>	 <p style="text-align: center;"><b>MT355E</b></p> <ul style="list-style-type: none"> <li>• 55 HP Diesel Engine</li> <li>• Shuttle Shift Transmission</li> <li>• Fold Over ROPs</li> <li>• Industrial Tires</li> <li>• 2229 Lb Lift Capacity</li> </ul> <p style="text-align: center;"><b>\$23,250</b></p> <p style="text-align: center;"><b>PACKAGE DEAL - 6' Brush Hog, 6' Box Blade, 18 Ft. Trailer - \$27,850</b></p>

## DIAMOND EQUIPMENT

4 Miles South Of Westphalia On Hwy 63 (573) 455-2617  
www.diamondequipment.com • sales@diamondequipment.com



# Drive into Spring In A New Vehicle!

## Sakelaris Ford Lincoln Of Rolla



**5-OIL CHANGES**  
**\$100.00**  
 Includes:  
 Oil, Filter & Up To  
 5 Quarts Of Oil  
 \* Excludes Diesel  
 & Full Synthetic

See us at our NEW location at 1621 Martin Springs Dr. in Rolla, MO.

**WE NEED YOUR TRADE AND/WE BY USED VEHICLES!**

★ Sales ★ Service ★ Parts

### SERVICE DEPARTMENT



Left To Right: Mike Sandusky, Dawn O'Neal, Becca Wadel & Jeff Goodman

### PARTS



Left To Right: Mike Chick, Lelan Hall, And Gene Scantlin

**Sakelaris Ford Lincoln offers Pick Up & Delivery Service for all Sales & Service!**

\*Must finance through Ford Credit Financing. Not all buyers will qualify for Ford Credit financing. Some restrictions may apply. Take new retail delivery from authorized Ford dealer's stock by 3/31/21. See dealer for qualifications and complete details on all incentives. Based on 2019 CY Sales.



### SALES TEAM



**Sakelaris Ford Lincoln Of Rolla**  
 www.sakelarisfordrolla.com  
 573-364-1211 • 800-325-1211 • 1621 Martin Springs Drive, Rolla, MO 65401

**TUFFY SPECIAL:** Volume prices. (573)657-2176. amegamobilehome.com

**WANTED TO BUY:** Standing timber. Call GARRIOT'S LOGGING, serving Mid-Mo. over 30 years. (573)220-1907 or (573)290-0527. garriottlog.com. Fulton.

**BULLS FOR LEASE:** Over 70 registered Angus & Hereford to choose from. 90 day lease \$900. Trucking available for extra charge. (573)999-3197, Kingdom City, MO.

**NEED ESTIMATE:** On Remodeling/Repairs. House North Of Crocker. 573-736-5471.

**INDIVIDUAL WITH 1-10 ACRES TILL/PLANT:** I furnish seed/fertilizer. Your Gross \$2000/\$3000 Acre. Info (573)604-0674.

**WATSON REG. POLLED HEREFORDS:** Open & bred heifers. Service age bulls, semen tested. (417)962-3759. Cabool.



New one owner John Deere 5045E: 600 hrs., w/512 John Deere Loader...Also JD 5ft. Brush Hog. (2) 5ft. Bushog Brand. 2 Bottom Plow like new & Post hole digger.

ST. JAMES TRACTOR REPAIR,  
 Old Hwy 66-South Outer Rd, St. James, MO 65559  
 573-263-2732 S15-#62S

## Spring HOME CARE



Have you scheduled your spring roof inspection yet?

We offer **FREE**, no-obligation, roof inspections! Give us a call to get on our schedule!

**ABOVE & BEYOND ROOFING**  
 SERVING LAKE OF THE OZARKS

1212 Spring Valley Rd  
 Osage Beach, MO 65065  
 573-302-0354  
 lakeozarkroofing.com

**JOHN DEERE 5310 TRACTOR:** 2WD, 522 loader, 3200 hrs., big rubber. \$16,950. Call (573)881-3557.

**WANTED: 1948-1952 Cadillac, Olds or Buick slant back.** No title, no problem. No text please, (314)960-7759.

**EDGEWOOD GARDENS, LLC**  
 Formerly Shirks Produce

573-392-8647 • 20203 Jones Creek Road, Barnett, MO

Great Selection Of Trees & Shrubs

- Retail & Wholesale
- Quality Plants
- Reasonable Price
- For All Your Flower Needs!

March - November  
 Mon-Fri 8AM-6PM • Sat 8AM-5PM

**Perry's Repair Center, LLC**  
 Marine Sales & Service  
 Parts & Accessories  
 Suzuki Outboard Dealer,  
 Landau Pontoons,  
 Welded Jon Boats

573-732-5563  
 Bourbon, MO

**NOW HIRING - APPLY IN PERSON**  
 Truck Drivers Needed. Must Have Class B With Air

**Blue Grass Ready Mix, LLC**  
 573-336-8400  
 Fax 573-336-8444

VETERAN OWNED & OPERATED  
**Mark Harris**  
 16500 Blue Grass Drive  
 St. Robert, MO 65584

**WANTED: HOUSE trailer** in reasonable condition. Needed location: 15 miles north of Bolivar. Call: 270-726-9468.

**FOR SALE:** 6-1/2' Sunlite slide-in fold camper, roof air. \$3000. No text please. (314)960-7759.

**Cow Country Gate Sales**  
 We specialize in HEAVY DUTY gates

16889 HWY 52 BARNETT, MO  
 573-569-4754

MULTIPLE GATE DISCOUNTS

4'-6' Bar • 6'-6' Bar • 8'-6' Bar • 10'-6' Bar  
 12'-6' Bar • 14'-6' Bar • 16'-6' Bar • 20'-6' Bar  
 16' Gate - \$195



**14 COWS:** Black bull, 10 calves, \$18,750 all 25 head. (573)437-3590.

**FOR SALE:** 1980 SA200 Lincoln Welder, Leads And Trailer Included. 573-690-0669.

**FORD 1938 PICKUP:** Shorted, V8, 3-speed, Rust free, No dents, no bondo, 100% complete, not running. \$7,950. (573)636-8000 JC.

**JOHN DEERE 4020 D TRACTOR:** 1970 one owner, with JD 148 loader, good sheet metal, poor paint, 10,000 hrs. \$14,500. Call (573)881-3557.



**LOST VALLEY LAKE RESORT MEMBERSHIP FOR SALE:** Paid \$7,900 Unable To Travel Due To Age And Health Issues, Willing To Sale For The Cost Of Deed Transfer And Administrative Cost With LVL, \$1,700. **573-418-4939**

D15

**REG LIMOUSIN Bulls:** Homo Black, Polled, Low Birth, High Growth, Excellent EPD's, Semen Tested, 15 Months. www.middletonlimousin.com. 319-956-9878.

**QUALITY REPLACEMENT COWS:** cow calf pairs bred heifers and breeding bulls, butchering calves. Trucking available. (660)619-5190.

**DOOLITTLE WOOD PRODUCTS**  
573 762-2850

**BUYING**  
8', 10', 12' Logs  
Contact Seller

Call Chris Smith 573-578-1153 Cell  
**DOOLITTLE WOOD PRODUCTS**  
**573-762-2850**

**TONGUE AND GROOVE CAR SIDING:** Pine, Western Cedar and Red Cedar. www.pineridgerustic.com, (573)729-7226. Salem

**PACKARD 1950:** 4 Door, Deluxe, excellent paint and interior, sharp, 8 Cylinder, 3-Speed, overdrive. \$13,900. (573)636-8000. Jefferson City.

**Bourbon Location Only!**

**Planet Sub**  
THE OVEN BAKED ORIGINAL.

194 Old Hwy 66 • Bourbon, MO 65441  
**573-732-3263 • www.planetsub.com**

BUY ONE GET ONE \$1 1/2 Sub

**BARON'S GUNSMITHING:** Fast professional repairs. Old/new firearms. (573)363-5801. Camdenton.

**NO \$\$\$ DOWN MOBILE HOMES:** Call for details. (573)499-9993. columbiadiadscounthomes.com

**Sunshine Foods LLC**  
Deli • Bakery • Surplus Groceries • Bulk Foods  
19532 Hwy C, Barnett, MO 65011  
Between Versailles & Highpoint On Hwy C

**DELI SPECIAL**  
Marble Cheese Was \$4.35 lb...NOW \$3.35 lb  
Hand Salami Was \$5.35 lb...NOW \$4.35 lb  
Prices Good Thru April 20th  
While Supply Lasts

<b>Breaded Popcorn Shrimp Sale!</b> \$8.99 3 lb ea Was \$10.49 ea	<b>Maple Pork Links Sale</b> 99¢ 8 oz Was \$1.25	<b>Sandwich Bologna</b> 50¢ 12 oz Sale! Was 75¢
<b>Dinner Franks</b> \$1.10 16 oz Sale Was \$1.49 ea	<b>Fully Cooked Taco Sale!</b> \$4.99 90 oz Buy 1 Get 1 Free	<b>Beef Ribeye Roll</b> \$3.79 lb Sale! Was \$4.49 lb
<b>Dark Chocolate Berry Granola</b> \$1.75 lb	<b>Creamy Peanut Butter</b> \$1.49 16 oz	<b>Sugar River Beef Sticks Ends &amp; Pieces</b> \$6.99 32 oz Sale Was \$8.99

Store Hours: Mon-Sat 8 AM-5 PM, Fri 8 AM-7 PM, Closed Sunday  
**We Now Accept EBT M/C, Visa, Discover 573-378-6500**  
Check Out Our Pallet Areas For Even Larger Savings On Case Quantities

**MISSOURI LAND COMPANY**  
Your Land & Farm Experts!

14981 Centerline Ave. • Cole Camp, MO 65325  
660-668-4868 • 844-974-1850  
12647 S. Hwy 63 • Rolla, MO 65401  
573-308-4868 • 844-974-1850  
www.MissouriLandCompany.com



**BENTON CO - 16 ACRES - \$39,500**

Borders state Hwy AB and also county rd frontage. This will be a good hunting tract or a good place to build. Electric and high speed internet is available. Lake of the Ozarks is just right down the road. 20 minutes from Lincoln Mo or Cole Camp Mo. These type parcels are what everyone is looking for. Some light restrictions will be on the property to protect the neighboring landowners. More land is available if you want more acreage. Property has been recently logged, but still lots of standing timber. **Please call Mike Stoner at 573-774-9775.**

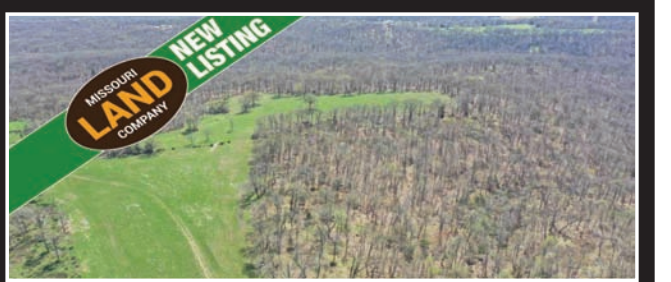


**BENTON CO - 140 ACRES - \$189,000**

Buy 140 and hunt another 1750 acres! This 140 sits surrounded by 1750 acres of conservation land that is full of deer and turkey. This property has been recently logged, but at this price and some clean up you can have tons of food plots and attract all the wildlife to this tract. Several lay down areas where the log piles were that can be made into some nice open areas. There is some wet weather creeks and a small pond for water source. There is electric and high speed internet from Co-Mo power company. Close to Lake of the Ozarks and only a 1/4 mile or less of gravel from Hwy FF. Stover Missouri is the closest town and only 15 minutes away. There are some great views from this property for building a cabin or a new home. This property won't last long! **Call Mike Stoner at 573-774-9775 Cell**

**With So Many Properties Under Contract, We Need More Listings!**

If You Have Land You Want To Sell  
- **NOW'S THE TIME!** -  
Contact Us & Get Your Land Listed.



**MORGAN CO - 77 ACRES - \$175,000**

This is the perfect all around tract of land. Great open fields for livestock or some huge food plots. This is behind a locked gate and is part of a bigger tract, so if more land is needed, we have several hundred acres available here. Property will be surveyed, and will have electric with high speed internet option from Co-Mo. Several fields surrounded by some good mature timber. There is a creek and a live spring on the property. This area is known for great deer and turkey hunting. I saw several deer, turkey and one gobbler even strutting. If you like hunting mushrooms this place will have them! Only 15 minutes from Stover, Mo. Lake of the Ozarks is close as well for additional recreation. Just down the road is thousands of acres of conservation land for additional land to explore. This 77 acre tract will not last long in this market! Some light restrictions will be on the property to protect other landowners. A copy can be provided. **Call Mike Stoner at 573-774-9775 Cell**



**MORGAN CO - 33 ACRES - \$77,550**

These small tracts this size are in high demand! Very private and behind a locked gate. Good timber, some spots for food plots and trails already on the property. Property will be surveyed and part of a bigger tract of land. There will be some light restrictions put on the property to protect the other land owners. Can provide a copy of these restrictions. High speed internet and electric available. This area is known for some very good hunting. Get it bought and hunt here soon! Property also borders county road. This property is 15 minutes from Stover, Mo. Lake of the Ozarks is close by for more recreational fun. Just a mile away is several thousand acres of conservation ground for additional acreage to explore. **For more information contact Mike Stoner at 573-774-9775 Cell**



**BENTON CO - 20.5 X2 - \$49,500 EACH**

Only 20 minutes from Lincoln or Cole Camp Missouri. Really close to Lake of the Ozarks with some Lake Views. Great place to build that dream home, with electric and high speed internet available. There are two 20.5 acre tracts side by side or take the whole 41 acres. Seller is in the process of logging this tract, but lots of good standing timber left. You won't find this nice of a laying tract close to the Lake for this kind of money. Some light restrictions will be on these tracts to protect the landowners close by. This land will make a great place to hunt, with lots of deer in the area. **For more information contact Mike Stoner at 573-774-9775 Cell**



# Relief DRIVERS



## WANTED

~ STARTING POINT: CROCKER ~

**MUST** Be At Least 25 Or Older & Have A Valid Chauffeurs License

Contact:  
**Ad Tracker  
Office**



Crocker, MO.

**573-736-2226**

Or Stop By: MONDAY - FRIDAY 8 AM - 5 PM



# BUSINESS SERVICE DIRECTORY

TO PLACE YOUR AD ON THIS PAGE CALL TODAY!

*"A Better Chance To Beat The Competition"*

390,000 PAGES OF ADS  
DELIVERED EVERY WEEK!  
**573-736-2226**

## AIR PURIFIER

**Www.Fressshaire.com**

3 FREE DAYS TRIAL In Your Home-Office-Business YES, try before you buy

**Best technology - Best solution kills SARS/Covid-2(cause of Covid-19)**

EMORY MACY, 573-855-7321  
CEO, Certified Air Coach

- Certified, Verified, Validated by FDA, NASA & PBS
- Air & Surface Pro kills 99.9999% of germ or virus of RNA/DNA Viruses - 30 minutes
- Kills germ/virus on Surfaces? YES
- Requires no air movement! Does NOT suck air. Filterless technology - Disinfect 3,000 sf
- Makes ActivePure Molecules to kill germs/viruses
- NASA Space Technology : Hall of Fame Inductee 2017

## ANTIQUES & MORE

**LOZ ANTIQUE MALL**

ANTIQUES - COLLECTIBLES - SOME JUNK

Like us on facebook (573) 298-3699

21 Cave Dr. Eldon, MO 65026  
www.lozantiquemall.com

Booth Rentals & Consignment, 18,000 Sq. Ft., Over 130 Booths

## ANTIQUE/VINTAGE/HOME DECOR

**THE RUSTY ROOSTER MARKET PLACE**

Antiques ♥ Furniture  
Home Decor  
Vintage & More

Mon. - Sat. 9 A.M. - 5 P.M.  
(417) 718-9136

208 WEST COMMERCIAL ST. LEBANON, MO

## CABINETRY

Evan Bontrager, Owner  
19862 Maries Rd. 636  
Dixon, MO 65459  
573-759-4456

Try Calling 12:30-1 P.M. Work Days

**South Central Missouri Cabinetry**

New Construction or Remodels  
**Custom Cabinets**

## CAMPING AND FLOATING

**Ruby's Landing**  
Cabins, RV, Primitive Camping & Floating  
www.rubyslanding.com

Long Term Available

rubyslanding.mo@gmail.com  
573-855-9567

22474 Restful Ln  
Waynesville MO 65583

## CATTLE EQUIPMENT

**Rissler Mfg Co.**

**CATTLE HANDLING EQUIPMENT**

2 7/8" Pipe • 7/8" Sucker Rods • 2 7/8" Post Caps  
Feed Banks • Bale Spike • Crowding Tubs  
• Bale Feeders Feed Bins • Squeeze Chutes • Hay Bale Trailers Headgates • Self Feeders  
• Calf Creep Feeders • Gates • Corral Panels

18998 Highway AA • Barnett, Mo 65011 573-392-6960

## ENGINE/WELDING REPAIRS

**VALLEY SHOP**  
(660) 458-6747

Repairs/Rebuilds • Welding Repairs  
Engines, Trasmissions, • Electrical  
Hydraulics, PTO Drivelines

38745 Molasses Mill Road Latham, MO 65050

## FURNITURE

**ARROWMART**  
Furniture & Appliances

4 Ways To Pay  
4 Ways To Save

\* Cash & Charge Card With Instant Cash Rebate  
\* 12 Months Same As Cash-W.A.C  
\* 4 Payments Same As Cash-With No Credit Check  
\* 18 Month Lease To Own- With No Credit Check

669 VFW Memorial Drive  
St. Robert • 573-336-5000  
227 N. Business Hwy. 5  
Camdenton • 573-346-1975

## GROCERY STORE

**ROADSIDE COUNTRY STORE**

36402 Hwy. E, Latham, MO - 660-458-6386

Variety Of Ice Cream • Frozen Food • Vegetable Plants  
Fresh Produce • Variety Of Groceries • Bulk Foods

Mon. - Thurs 8 A.M. - 5:30 P.M. • Fri 8 A.M. - 6 P.M. • Sat. 8 A.M. - 4 P.M.

## HOME IMPROVEMENT

**NEIGHBORHOOD'S HOME IMPROVEMENT STORE**

Where QUALITY Doesn't Cost More!  
19850 Husston Rd • Lebanon, MO 65536  
417-533-5080 • 1-888-776-0038  
www.neighborhoods-inc.com

## OUTDOOR FURNACE

0% for 4 Years

**HEATMOR™ Outdoor Wood Furnace**  
As Low As \$168\* per month.

HEATMOR MIDWEST at Licking, MO 65542  
Toll Free: (877)674-2962

## PAVING

**STOMBAUGH ASPHALT**

Paving - Seal Coating - Striping

Call For A Free Estimate!  
573-406-8706

Fully Insured

## PLANTS

**Cedar Hill Nursery**

NOW OPEN

Onion Sets, Seed Potatoes, Bedding Plants  
Trees, Bushes, Roses, Vines, Succulents & More

660-337-6392 • 16602 Ivan Rd. • Fortuna  
From Versailles Take Hwy. 5 North Turn Right On Hwy. HH To N. Cattle Drive. Follow Signs.  
Open 9 A.M. - Dark Monday-Saturday

## RETAIL

**LATHAM MARKET**

255 South Hwy E • Latham, MO

573-789-5252

- Antiques, Collectibles, Unique Gifts
- Surpuls And Tools, Housewares, Bicycle Parts
- Rustic Cast Iron Decor - Thousands To Choose From
- Over 10,000 Sq. Ft., Retail & Wholesale
- Quantity Discounts

Closed Sunday & Monday HOURS: 9 A.M. - 5 P.M.

## SALVAGE

**Poor Boys Garage & Salvage**

24 Hr Wrecker Service

573-336-4957 17575 Superior Rd. • St. Robert, Mo

## SEWING/QUILTING

New Machines Starting At \$149.00

**Top Stitch Sewing Service LLC**

**BERNINA**  
SWISS QUALITY  
573-378-2700

SEBO VACUUM CLEANERS Made In Germany

Sales & Service On All Makes  
Tues.-Thurs. 8-5 • Fri. 8-6 • Sat. 8-12

## SURPLUS/DISCOUNT

**COUNTY ROAD SURPLUS L.L.C.**

Tools • Toys • Gift Items • Household Items  
Discount Tables Where Prices Drop Daily

19661 Excelsior Road  
One Mile East Of Excelsior  
Credit Cards Accepted

573-378-4201 Monday-Saturday 8 A.M. - 5 P.M.

## TRANSPORT

**NUTRA AG LOGISTICS, LLC**

DRY BULK TRANSPORT • FEED & GRAIN HAULING • HOPPER AND AUGER TRUCKS

PHONE: 573-378-2800  
12747 MARKET RD  
VERSAILLES, MO 65084

## WELDING

**SMITH CREEK WELDING**

General Repair • Big Bale Trailers  
Bale Forks • Pallet Forks  
Also Custom Built Forks

35531 Higgins Rd • Tipton, MO  
660-458-6316

Place Ads By Calling Us At **Ad Tracker**  
(573)736-2226 Or Mailing P.O. Box 37 Crocker, Mo 65452  
Classified Ads Are ONLY 50¢ Per Word! Sell Today!





2013 FORD F-250 KING RANCH: 4x4, Auto, Crew Cab, 117,xxx Miles, \$29,995. Also 2013 Ford F-150 FX, 81,xxx Miles, \$19,000.

JIM REAGAN AUTOS, Quality Cars And Trucks  
11223 ST. RT V. ROLLA, MO. 65401 573-308-7373 R12

25 HEAD HEIFERS: Some BUYING STANDING TIM-  
bred, \$1000 each. (573)437- BER: Chris Smith Logging.  
3590. (573)762-2850.

HAPPINESS IS NOT A 2007 MONTANA w/Bucket:  
STATION YOU ARRIVE AT, 44 HP, Power Steering, 4WD.  
BUT A MANNER OF 300 Hours, New Brush Hog.  
TRAVELING \$12,500. OBO. 573-308-2213.

NO \$\$\$ DOWN MOBILE HOMES: Call for details.  
(573)499-9993. columbiadis-  
counthomes.com

WANTED: OUTBOARD motor with prop, 50 h.p.-70 h.p. with controls. (573)480-7524.

## ROBERTSON'S FERTILIZER & LIME SPREADING LLC

309 Hwy C • Bourbon, MO 65441

573-259-1667 or 573-259-4244

[www.robertsonfertilizer.com](http://www.robertsonfertilizer.com)

**BULK FERTILIZER  
SPRAY CHEMICALS • SEED • CUSTOM WELDING  
SKID STEER WORK • PIPE FENCING**

## FISH DAY

Saturday, May 8th, 2021

8:00 AM - 9:00 AM

Call 573-259-4244 To Place An Order

Orders Must Be Placed By

Tuesday, May 4th, 2021

WILL BUY Vintage Sports Cards: Baseball, Basketball, Football. 573-680-1170.

HORSE QUALITY BROME SQUARE BALES: \$5.50/bale. (573)808-6382.

MAKE THE MOST OUT OF YOUR ADVERTISING WITH PRINT COPIES!



Ad Tracker

Place Ads By Phone (573)736-2226

Email - [adtrackerdisplay@yahoo.com](mailto:adtrackerdisplay@yahoo.com) Or Fax (573)736-5691

[www.westgatetrailer.net](http://www.westgatetrailer.net)

Serving Your Trailer and Truck Bed Needs in Two Locations

8920 West Bus.60,  
Mtn. Grove, Mo  
M-F 8-5 • Sat. 8-12

7136 West Farm Road 140,  
Springfield, Mo.  
M-F 8:30-5 • Sat. 9-12

**417-926-7733 417-351-6974**

**FULL SERVICE SHOP**

WEHMEIER ANGUS: Yearling Angus bulls. Call (573)578-7434.

DREAM HOUSE: Online, chateauhomes.net. Call Marla (573)657-7040.

10' 3 PT. HITCH ROAD GRADER: Heavy steel, new piston, hoses old but not leaking. Call (573)216-8444. Located in Macks Creek, MO.

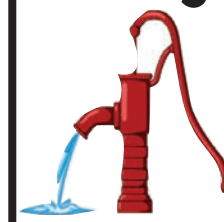
55 GALLON Barrels: w/Lids. \$10. 573422-3455.

9 STEERS: Weaned, \$5500. 300-400 lb. (573)437-3590.



FOR SALE: By Owner, 3 Bedroom House, \$20,000 OBO, Needs Work. 314-603-1717 Dixon, MO C-12

## Long Pump Service



24 Hour Emergency Service  
Pump, Pressure Tank Installation,  
Water Leak, Repair And Excavation

Pumpman85@gmail.com  
25 Curry Rd. Iberia, MO  
Like Us On Facebook

**Evan Long  
573-286-1986**

JOHN DEERE 4400 Diesel Combine: ACE Lots Of New Belts And Bearings, New Clutch, Almost New 23.1x26 Drive Tires, 3,000 Hrs, \$3,000. 314-712-1358.

FOR SALE: Cows, calving now. 75 blk/blk w/f, 5 to SS. 40 Charolais cross cows, 3-7 years, cows are gentle and big. (660)537-6247 or (660)838-6247.

# Meadowview Dutch Market

Now Accepting Credit And Debit Cards EBT Cards

Discount & Surplus Groceries • On The Country Road

Prices Subject To Stock On Hand - 417-993-3017

Tunas, MO • 3 Miles East On Hwy. E Off Of Hwy. 73 • Mon.-Thurs. 8-5 PM, Fri. 8-6, Sat. 8-5

Call To Order 417-993-3017 ◦ DELI SPECIALS! SALE DATE - April 14 - April 20, 2021

Try Our Fresh Homemade Deli Sandwiches, Turkey, Ham, Roast Beef, Italian, BLT's, Pulled Pork And BLT Pulled Pork Or (Made YOUR Way!) (Come In Or Call To Order) Also Custom Made Deli Trays! Veggie Or Fresh Meat-N-Cheese

Smoked Cheddar.....Reg. \$5.59 Lb.....Sale \$5.09 Lb  
Smokehouse Ham.....Reg. \$5.49 Lb.....Sale \$4.99 Lb

**5 Lb Russet Potatoes \$1.99 Ea**

**Sliced Wright Bacon \$4.99 Ea 1 1/2 Lb**

**Cains Kosher Dill Chips Reg. \$1.99 SALE \$1.49 22 Oz.**

**Oscar Mayer Weiners SALE 99¢ Reg. \$1.09 16 Oz.**

**Sliced 5 Lb American Cheese SALE \$7.99 Ea Case Of 4 \$7.49 Ea Reg. \$9.50 Ea**

**Sliced & Shaped Philly Style Beef Slices \$2.49 Lb**

**Party Pizza \$1.99 Ea 10.9 Oz.**

**Pork Rib Tips \$1.79 Lb**

**Ground Beef 85/15 \$2.99 Lb**

**Approx. 10 Lb Rolls**

**1/4 Lb Beef Patties \$5.99 16 ct.**

**Homegrown Quality Vegetables Florida Farms Directly To Our Store!**

**While Supplies Last!!**



**2007 MONTANA w/ Bucket:** 44 HP, Power Steering, 4WD, 300 Hours, New Brush Hog, \$12,500. OBO. 573-308-2213.

**TRAILERS: CUSTOM built!** Since 1993. STILLWATER. Stanton. (573)927-5600. www.stillwatertrailers.com

**LOG SIDING:** 2x8 Pine/Wester Cedar. pineridgerustic.com (573)729-7226. Salem.

**BLACK REGISTERED LIMOUSIN BULLS FOR SALE:** 15-20 months. Very gentle, hand fed. FITZPATRICK FARMS. (573)694-0164.

**Gooseneck and Winchester Star pipe cattle trailers the best in the business here and ready...**



**Cowtown USA**  
I-44 Exit 203 • 413 Daniels Rd.  
**Cuba, MO • 573-885-6300**  
www.cowtownusainc.com

**JOHN DEERE 709 BRUSH HOG:** New clutch, no welds, \$1750. Call (573)881-3557. **FOR SALE:** 8 hereford heifers, 14 months, open. (573)728-6970. Argyle.



**WEEKLY SPECIALS**  
Prices Valid 4-14-21 Through 4-20-21

Brown Sugar Ham.....	Only \$4.49 Lb Reg. \$5.25
Classic Turkey Breast.....	Only \$4.49 Lb Reg. \$5.49
Horseradish Cheese.....	Only \$4.99 Lb Reg. \$5.99
Smoked Bacon Cheddar Cheese.....	Only \$4.99 Lb Reg. \$6.25
Colored Peppers.....	2 For \$1.50 Reg. 2 For \$3.00
Red Seedless Grapes.....	Only \$1.99 Lb Reg. \$2.79
Broccoli.....	Only 99¢ Lb Reg. \$1.99
Cabbage.....	Only 49¢ Lb Reg. 79¢
Cauliflower.....	Only \$1.99 Reg. \$3.99
Celery.....	Only 89¢ Reg. \$1.29
Homemade Sweet Breads.....	.10% Off
Homemade Milk Tapioca Pudding.....	.10% Off

**1907 S. Business 54, Eldon, MO 65026 • 573-392-2059**

**9 STEERS:** Weaned, \$5500. **100% CEDAR Mulch.** 573-300-400 lb. (573)437-3590. 422-3455.

**CHRISTOPHER S. DEATHERAGE, N.D.:** Naturopathic doctor with 35 years clinical experience. Natural healthcare for children and adults. www.drdeatherage.com (417)683-1300.



**R&S Small Engine**

Provide Affordable Quality Service To Our Community

**417-733-3482**

Matt Est. 2008

DIAMOND K MFG.

"Quality Work at Affordable Prices"

573-378-4116

12342 Mt. Zion Rd • Versailles, MO

- 3 Pt Round Bale Unroller w/Hyd Cyl Hoses.....\$1,375.00
- Feed Bulk Hay Feeders 24'.....\$5,500.00
- 10' 7 Bar Corral Panels.....\$90.00
- 10' 6 Bar Bow Gates.....\$280.00
- 3 Pt Bale Spear w/Gooseneck Ball.....\$495.00
- 8'-10' Pull Type Box Blades.....\$1,900.00-\$3,000.00

**FOR SALE:** New cottage cabin. 1 or 2 bedroom, 1 bath, kitchen, living room, in private senior park like setting. Owners only, close to lake and marina and groceries. Call Ray for details (573)346-3030.

**FOR SALE:** 1 Antique Roping Saddle, \$450. 1 General Purpose Win-tech, \$250 w/Attachments. 1 New Simco 724016 Small Horse Trail Saddle (Never Used) \$850. All items OBO. 573-308-2213.

GUN SHOW

April 16th & 17th

Copper Kettle - Ashland, MO

Friday 5-9 P.M. & Saturday 8 A.M. - 4 P.M.

573-999-2365



**JOHN DEERE 5075 E TRACTOR:** MFWD, Cab, Reverser, 925 Hrs, H240 Loader, Clean, \$38,500. Call (573)881-3557. **B14**

**FOR SALE:** Gotway M Super X Electric Unicycle, 84 volts, 1600 watts, speed 35 m.p.g., 50 mile range on one charge, max weight 260 lbs. \$1000. Call (573)502-3566.

**AUSTRALIAN SHEPHERD PUPPIES FOR SALE OR TRADE:** Born Feb. 18th, shots, wormed, tri's and merles. Call (417)458-1047 or (417)967-6493.

Shop Sakelaris Ford Lincoln of Rolla Anytime at [www.sakelarisfordrolla.com](http://www.sakelarisfordrolla.com)

 2020 FORD EDGE	<p><b>0% APR   60 MOS.</b> + <b>\$3,250</b> CASH BACK off MSRP*</p> <p>FORD CREDIT FINANCING*</p> <p><b>On Select NEW 2020 Ford Escape Models</b></p>
 2020 FORD ESCAPE	<p><b>0% APR   60 MOS.</b> + <b>\$2,000</b> CASH BACK off MSRP*</p> <p>FORD CREDIT FINANCING*</p> <p><b>On Select NEW 2020 Ford Escape Models</b></p>
 2020 FORD F-150	<p><b>0% APR   36 MOS.</b> + <b>\$2,000</b> CASH BACK off MSRP*</p> <p>FORD CREDIT FINANCING*</p> <p><b>On Select NEW 2020 Ford F-150 Models</b></p>
 2021 FORD EXPLORER	<p><b>0% APR   36 MOS.</b> + <b>\$1,250</b> CASH BACK off MSRP*</p> <p>FORD CREDIT FINANCING*</p> <p><b>On Select NEW 2021 Ford Explorer Models</b></p>
 2021 FORD EXPEDITION	<p><b>0% APR   60 MOS.</b> + <b>\$1,250</b> CASH BACK off MSRP*</p> <p>FORD CREDIT FINANCING*</p> <p><b>On Select NEW 2021 Ford Expedition Models</b></p>
 2021 FORD ESCAPE	<p><b>0% APR   36 MOS.</b> + <b>\$1,000</b> CASH BACK off MSRP*</p> <p>FORD CREDIT FINANCING*</p> <p><b>On Select NEW 2021 Ford Escape Models</b></p>



**WE NEED YOUR TRADE AND/WE BUY USED VEHICLES!**

Sakelaris Ford Lincoln offers Pick Up & Delivery Service for all Sales & Service!

\*Must finance through Ford Credit Financing. Not all buyers will qualify for Ford Credit financing. Some restrictions may apply. Take new retail delivery from authorized Ford dealer's stock by 7/6/21. See dealer for qualifications and complete details on all incentives.

SALES TEAM





Sakelaris

Ford Lincoln Of Rolla

www.sakelarisfordrolla.com



Sales Hours:  
Mon.-Fri. 8 AM-6 PM  
Sat. 8 AM-4 PM

Service Hours:  
Mon.-Fri. 8 AM-6 PM  
Saturday 8 AM-4 PM

573-364-1211 • 800-325-1211 • 1621 Martin Springs Drive, Rolla, MO 65401



**WANTED: 1948-1952** Cadillac, Olds or Buick slant back. No title, no problem. No text please, (314)960-7759.

**OPEN LIM-FLEX HEIFERS:** 700 weights. (573)694-0164.

**DARDEN PROFESSIONAL TIMBER HARVESTING:** Buying Standing Timber. Great prices, improve wildlife habitat and improve forest health. State certified and fully insured. (573)247-4808 or (573)739-1122.

*Let The Bidding Begin*  
**YOUR AUCTION COULD BE HERE!**  
 Call For Details  
**573-736-2226**

**URBANA STOCKYARDS**  
 Urbana Stockyards Is Located At  
 22 S. College & Walnut In Urbana, MO

**SMALL ANIMAL & MISCELLANEOUS SALE**  
**Thursday, April 22, 2021 At 5 PM**

Once Again We Will Start Outside At 5 PM And Move Inside Starting With Poultry, Fowl And Small Contained Animals Then We Will Move To All Hoof Animals.

Accepting Consignments All Day Thursday  
 Beginning At 8 AM

For Pictures Check Out Urbana Stockyards  
 Facebook Page For Any Updates!

**For more information or consignment call:**  
 Amy Knight (417)594-1061 • Matt Whitney (417)588-0594  
 Joe Webster (573) 280-9586 • Brayden Whitney (417) 317-6340  
 Jeff Knight (Auctioneer) (417-594-0050)

**MILLER COUNTY REGIONAL STOCKYARD MARKET REPORT**  
 #4 Kent Rd. • PO Box 629 • Eldon, MO 65026  
 Ph. 573-392-5572 • Fax 573-392-0055

**CATTLE MARKET - April 12, 2021**  
 Great Turn Out From Producers And Buyers For Our Spring Market Ready Sale. All Classes Of Cattle Trending Higher With The Large Advancement In Calves Under 600 Lbs. One Load of 800 Lb Steers At \$1.40. Cows And Bulls Steady. Replacement Cow Sale Very Active. Good Selection Of Young Replacement Cows And Pairs.  
 Market Report Is A Computer Average On Cattle. Not A Computer High/Low.

STEERS:		HEIFERS:	
300-399 Lb.....	\$180.00-\$212.00	300-399 Lb.....	\$162.00-\$175.00
400-499 Lb.....	\$170.00-\$205.00	400-499 Lb.....	\$155.00-\$177.00
500-599 Lb.....	\$160.00-\$187.00	500-599 Lb.....	\$138.00-\$162.00
600-699 Lb.....	\$143.00-\$160.00	600-699 Lb.....	\$123.00-\$138.00
700-799 Lb.....	\$136.00-\$143.00	700-799 Lb.....	\$118.00-\$125.00 Few
800-899 Lb.....	\$130.00-\$138.00		

**Bulls-Fleshy/Small Frame:**  
 400 To 800 Lbs.....\$103.00-\$114.00

**Heifers - Fleshy/Small Frame:**  
 400 To 800 Lbs.....\$100.00-\$108.00

**SLAUGHTER COWS:**  
 Bone.....\$68.50-\$72.00  
 Breaking.....\$63.00-\$69.00  
 Slaughter.....\$57.00-Down  
 Slaughter Bulls.....\$60.00-\$97.00

**UPCOMING SPECIAL SALES:**  
 April 19 - Feeder Special  
 April 21 - Sheep/Goat Sale  
 April 26 - Regular Sale  
 May 3 - Feeder Special  
 May 10 - Regular Sale

**We Take The BULL Out Of Selling Cattle**

**BENEFIT FOR KENNY McMULLIN**  
 OWENSVILLE: There Will Be A Benefit For Kenny McMullin At Krooked Moon Distillery 1002 W. Franklin Ave., Owensville, MO. It Will Be Saturday, April 17 At 11 A.M. Kenny McMullin Was Diagnosed In November With Chronic Lymphocytic Leukemia And Small Cell Lymphocytic Lymphoma. He Takes Chemo Pills Twice A Day And Has Been Doing Chemo Intravenously Since The Beginning Of February. He Will Continue IV Chemo Treatments For The Next Five Months And Will Continue Chemo Pills For The Rest Of His Life. Since He has Been Out Of Work For A Couple Of Months And Will Be For Longer, We Are Having A Benefit To Help Raise Money For Doctor Bills, Medical Expenses And Everything That Comes Along With It. There Will Be BBQ Hamburgers And Porksteak Plates For Lunch From 11-3, Having A Blind Draw Cornhole Tournament With Cash Prizes Starting At 2, A Gun Raffle, A Pie/Dessert Auction At 6:30 P.M. And A D.J Or Band In The Evening For Entertainment. Krooked Moon Will Be Having Their Regular Dinner Service So Come ON Out And Have Some Fun, Get Your Belly Full And Help A Great Man Kick Cancer.

**SELL IT IN THE AD TRACKER**

**LIMOUSIN BULLS:** Homo black, homo polled breeding age, low birth weight, gentle, explosive growth. 14-16 month old bulls. Pen now open. Richard Little Eldon, MO. (573)392-7665.

**I BUY:** Used mobile homes. Call or text (573)338-6250 or email gregm@outlook.com

**NEED ESTIMATE:** On Remodeling/Repairs. House North Of Crocker. 573-736-5471.

**BUFFALO LIVESTOCK MARKET LLC**  
 Hwy 32 West, Buffalo, Missouri  
 Receipts 1347 Head April 10, 2021 - Feeders \$3-\$7 Higher Cows Steady

Steers	
300-400 Lb.....	\$180.00-\$205.00
400-500 Lb.....	\$165.00-\$193.00
500-600 Lb.....	\$160.00-\$180.00
600-700 Lb.....	\$150.00-\$161.00
700-800 Lb.....	\$141.00-\$149.00
800-900 Lb.....	\$123.00-\$133.50

Heifers	
300-400 Lb.....	\$140.00-\$173.00
400-500 Lb.....	\$136.00-\$163.00
500-600 Lb.....	\$135.00-\$157.50
600-700 Lb.....	\$130.00-\$144.50
700-800 Lb.....	\$122.00-\$130.00
800-900 Lb.....	\$107.00-\$121.00

Holstein Steers	
500-600 Lb.....	\$81.00-\$87.50
600-700 Lb.....	\$78.00-\$89.00

Feeder Bulls	
400-500 Lb.....	\$150.00-\$169.00
500-600 Lb.....	\$140.00-\$159.00
600-700 Lb.....	\$125.00-\$148.00
700-800 Lb.....	\$120.00-\$140.00
800-900 Lb.....	\$95.00-\$100.00
900-1,000 Lb.....	\$80.00-\$100.00

Slaughter Cows	
Big Fleshy #1,400 & Up.....	\$70.00-\$75.00
Med. Flesh.....	\$60.00-\$70.00
Thin Flesh.....	\$55.00-\$65.00
X Thin Light Carcass.....	\$50.00-Down

Slaughter Bulls	
High Dressing.....	\$100.00-\$109.50
Med. Dressing.....	\$90.00-\$98.00
Low Dressing.....	\$60.00-\$88.00

Check Out New Website [Buffalolivestockmarket.com](http://Buffalolivestockmarket.com)  
**Mon- Wed. Market On Radio**  
**Listen To KJEL Lebanon 103.7 FM Or YK00 Boliver .99 FM**

Lyle Caselman • Owner-Manager    Leon Caselman • Owner    Howard Miller • Owner  
 417-345-7876 • Mobile 417-533-2944    417-345-4514 • Mobile • 417-588-6185    417-345-9122

**CROSS BRED Dairy Dispersal:** Bred For Cheese And Cream Yield, Many Family Milk Cow Options, \$1,000. 660-458-6747.

**RANGER TRUCKS AND TRUCK PARTS:** We buy & sell Rangers, Escapes, Focuses and related. (573)793-2699.

**Gratz Real Estate Auctioneering**  
 Four Generations Strong  
**SAT., APRIL 17 AT 10 AM**  
**8007 ROUTE W**  
**JEFFERSON CITY, 65101**  
 Directions: Route B to Wardsville, Take Route W to auction site

**GUNS - to sell at 12-noon**  
 Remington 870 Wingmaster Pump 12ga; Remington 870 Wingmaster Pump 20ga; Steven 77F Pump .410; Winchester model 94 lever action 30-30; UMC Double Barrel 12ga; L.C. Smith Double Barrel 12ga; Walker International Mod 21 .22 caliber pistol; Ithica M-49 lever action .22 rifle; Ithica M66 Super Single Shot 20ga; Fulton 20ga Double Barrel; Stevens 16ga Single Shot; Charles Daly 12ga; & Reloading equipment for shot gun & rifle.

**ANTIQUES**  
 Old Antique spinning wheels; Large lot of various vintage tins; 2 Wooden whiskey barrels; Old cello & fiddle; & Feed grinder; Stone marbles; Small collection of primitive arrowheads; Lots of misc. antiques.

**OUTDOOR**  
 2006 Kawasaki Prairie 360; Yard tools; Huskee LT 4200 Riding mower; Huskee LT 3800; Lawn trailer; Lawn tools; Wheel barrow; Toro push mower; Stihl electric trimmer; Black & Decker hedge trimmer; Leaf-weed blower, 20vlt battery; Garden tillers; Pole saws; 16' John boat w/ trailer & Yamaha 25HP motor; 14' Narrow John boat; 2 Wheel 6'x10' trailer; 5'x7' Pop up camper; Lincoln 225 Welder; Air tank; Lanterns; Air compressor; Gas Blower; Chain saws; Drill press; Swisher; Gas lawn sweeper; Belt sander; Small Bandsaw; Steel traps; ATV sprayer; Beam scale; Several outboard motors; Numerous small hand tools; Electric power tools; Step ladders; Wood clamps; Shopsmith wood lathe; Foley Bel-saw; Fasteners & joiners; Craftsman table saw; Sears compound miter saw; 7" Central machinery jointer; C-clamp; Wood clamps; Cast iron implement seat; 3-Burner camp stove; 2-Burner camp stove; BBQ pit; Farmall Cub w/grader blade; Rough cut lumber; & Misc.

**HOUSEHOLD**  
 Dinette w/6 chairs & extra leaves; Stainless cookware; Cast iron skillet; Small flatscreen TV; Recliner; Pair of side tables; 5-Drawer chest of drawers; Wooden desk; 4-Pc French Provincial bedroom set; 4-Pc bedroom set; Window units-110volt; Frigidaire upright freezer; Portable heater; Flexible flyer childis wagon; 5-Gallon Crocks; Crock jugs; Leather stamping kit; Sewing & crafting books & supplies; & Various Misc. Items.

**PROPERTY OF THE ESTATE OF PAUL BRAUN**  
 Auctioneers Note: Paul Was A Member Of The Mo Trapper Assoc., So There Is A Lot Of Trapping & Tanning Equipment. Refreshments Served By The Osage Bend 4-H.

**PERSONAL PROPERTY TERMS:** Cash, Credit Cards or Approved Checks. A 3% surcharge will be charged on all credit card purchases. A \$25 fee will be charged for all returned checks. Not Responsible for Accidents, Theft, or Loss. Buyer must register for bidder's number day of Auction and show proof of proper identification. Photo required. Announcements on the day of Auction take precedence over printed matter. Auctioneers are licensed in Cole County, Missouri.

**GRATZ REAL ESTATE & AUCTIONEERING**  
 BILL GRATZ - 573-690-0477    CRAIG GRATZ - 573-694-3001    LOGAN GRATZ - 573-690-0296  
**AUCTIONEERS**  
 5718 Wardsville Rd, Jefferson City, MO 65101  
 Office - 573-635-4168    www.callgratz.com

**Salem Livestock Auction**  
 Hwy. 32 Salem, MO • 573-729-8880  
 Over 40 Years in the Livestock Business

**Stock Cow Sale**  
 Saturday, April 17th @ 1P.M.

22 Black Cows running ages 18 with 250lb black calves bred to Black Bull.  
 2 Black Bulls.  
 31 Mix Cows running ages 23 with calves balance 3rd stage bred to Black Bull.  
 1 Black Bull.  
 30 Red & Black 1st Calf Heifers 25 with 250lb calves bal 3rd stage bred to Hereford Bull.  
 12 Black Cows 3-6 yrs 2nd stage bred to Black or Hereford Bull.  
 25 Black & Red 1st Calf Heifers all with calves majority bred back to Black Angus Bull.  
 15 2nd Calf Cows all with calves bred back to Black Angus Bulls.  
 1 Black Angus low birth weight Bull 18 months will be semen checked.  
 1 Black Angus Bull 24 months Will be tested.  
 1 Red Angus Bull 24 months will be tested.  
 1 Hereford Bull 24 months will be tested.  
 47 Black Cows 3-5yrs 2nd & 3rd stage bred to Black Bulls  
 Home raised - SELL OUT.  
 17 Char & Black Cows 4-7yrs 2nd & 3rd stage bred to Char or Black Bulls.  
 22 Mix Cows 3-7yrs few with calves bal bred to Black or Char Bull.  
 19 Red & Black Cows 4-7yrs 2nd & 3rd stage bred to Black Bull.  
 10 Red Cows 4-6 yrs few with calves bal 2nd & 3rd stage bred to Angus or Branford Bulls.  
 30 Black & Red Cows 4-6yrs ALL w/ 250-300lb calves, Running back with a Black Bull, Gentle - COMPLETE SELL OUT  
 1 Hereford Bull 24 months, Super stout, Son of the famous cow maker P606. This Bull should only be used on Cows. Bred to make super replacement Heifers & Steers that will gain. 82lb birthweight - Semen Checked Good - 40cm scrotal

**Cattle Sale Every Monday at 12** Feeder calves to sell at 12, butcher cows & stock cows following

**All Consignments Welcome Up Until Sale**

Allen Thompson 417-932-4097    Renee Lauderdale 417-926-2682  
 Chuck Thompson 417-257-5610    Brandon Barton 417-259-1597  
 Bryce Lauderdale 417-255-5124

Terms of Sale:  
 Cash or Approved Check!

**SALEM LIVESTOCK AUCTION**  
 SALEM, MO

**KNIGHT AUCTION SERVICE, LLC**  
 130 W. FREMONT ROAD • LEBANON, MO 65536

**AUCTION**  
**Friday, April 16th**  
**At 7:00 PM**  
**ONLINE ONLY BIDDING**

The Knight Auction Center  
 130 W Fremont Rd • Lebanon, MO

Selling over 900 lots to include; Ranger mod 103-8 22 rifle, Italian 6.5 rifle, Chiappa mod 1911 22 pistol, Stevens mod 320 12 ga in box, Savage mod 62F in box, Mossberg mod 9200 12 ga accu choke, Elgoibar 12 ga o/u shotgun, Bushmaster XM15-E2S 223/ 5.56 , Ruger 50th Anniv New Model Blackhawk 357 in case, Charter Arms Pathfinder Target 22 rev, Century Arms Grand Power P1 9mm in case, CAI Commodore .45 in case, Taurus 82s 38 spec in case, Walther P22 22 in case, Type 26 Japanese 9mm pistol, Smith & Wesson MP15 Sport II 5.56 Nato, 2 Anderson AM 15 5.56 nato rifles, SM & LE 3 1918 MK1 303 rifle, Mossberg 190 KB 16 ga shotgun, New England Arms Pardner Tracker II 12 ga, Mossberg mod 835 12 ga , GSG Firefly 22 in case, FMK 9C1 G2 9mm , Taurus G2C 40 S&W , 6.5 grendel barrel, Sight Mark Wraith HD 4-32x50 day night scope, Horton Legend HD175 crossbow w scope, gun cases, gun magazines, large lot of ammo, 35 silver dollars, \$500 bill, silver coins, red seal notes, confederate currency , old paper currency, collector coin sets, several new lots of tools, rods and reels, blankets, remote cars, and much much more . Preview Friday from 2 to 4 PM. To view entire listing and pictures and bid online go to [www.knightauction-service.hibid.com/auctions](http://www.knightauction-service.hibid.com/auctions) ! 10% buyers premium.

**417-532-7497**  
 "Complete Sale Service"  
 Jeff 417-594-0050 • Steve 417-718-0293  
[www.knightauctionservice.com](http://www.knightauctionservice.com)



**DAVIS BOAT REPAIR: PIPE & SUCKER ROD & CUT POST:** Different sizes. (573)578-2687/ (573)422-3735.

**1ST CUTTING ALFALFA/ORCHARD GRASS MIX:** 80/20, 19.6 protein, 55 lb. bales, \$6, delivery available. Call (573)881-3557.

**FOR SALE:** 3 bedroom., new metal roof, furnace & carport. Deck, fenced. Rolla, MO. 1307 Maple. \$60,000. (573)308-5469.

**AD TRACKER 573-736-2226**  
**40' STORAGE TRAILERS & CONTAINERS:** for rent. Delivery extra. (636)583-8077. Union.

**April 15, 2021 Page 11**  
**FOR SALE:** Chicks, hatching eggs, chickens, ducks, geese. Call Lee 1-314-240-3096. Licking, Mo.

**DOUBLE L COUNTRY STORE**  
 500 Hwy 28, Belle, MO • 573-859-3114  
**FISH DAY - SATURDAY, MAY 1ST**

**Fish Availability And Price**

Channel Catfish	
6-8".....	80¢
8-12".....	\$1.15
Hybrid Bluegill	
2-3".....	65¢
3-5".....	\$1.05
Largemouth Bass	
2-4".....	\$1.25
6-8".....	\$3.75
Bluegill Sunfish	
2-4".....	65¢
4-5".....	\$1.05
Grass Carp	
8-12".....	\$7.00
Fathead Minnows	
(4 Pounds = 1,000 Minnows)	
Per Pound.....	\$9.50
Golden Shiners.....	\$9.95
Black Crappie	
2-4".....	\$1.05
4-5".....	\$1.80
Albino Catfish	
6-8".....	\$3.25
Redear Sunfish	
2-4".....	99¢

**Order Must Be Placed By Thursday, April 28, 2021**

BRING YOUR OWN CONTAINERS WITH WATER FROM YOUR POND/LAKE  
**NO City Water - It has Chlorine that kills fish**  
**NO Well Water - Well water is low in oxygen and temperature differences causes need for tempering.**  
 LID FOR CONTAINERS ARE RECOMMENDED!!

To protect your investment when buying fish, bring the following amounts of POND water to transport fish for approximately 10-15 minutes. For each 5 minute increase in haul time, double the recommended amounts of water or use a suitable aeration device.

5 Gallons Per:	10 Gallons Per:
1-2 Grass Carp	100 1-4" Fish
20 Gallons Per:	
100 4-8" Fish	
50 Gallons Per:	
4 Lbs. Minnows	100 8-12" Fish

**MISSOURI RAISED FISH From Country Fish Farm, LLC • Salem, MO**  
 Phone (573) 729-4383 Fax: (573) 729-5021  
 Email: fish@wavecomputers.net • Website: www.missourifishfarms.com

Country Fish Farm, LLC also sells quality - made in the USA - pond and lake aerators and fountains, with or without lights, factory direct at great savings!!! Please contact us for more information.

**HAY FOR Sale:** 4x5 Round Bales, Good Quality Grass And Clover. 417-345-6813 Or 417-446-2070.

**FOR SALE:** 6-1/2' Sunlite slide-in fold camper, roof air. \$3000. No text please. (314)960-7759.

**STORAGE AUCTION**  
 April 20th At 10:00 AM  
 44 Waynesville Self Storage  
 20155 Salina Road • Waynesville, MO 65583  
**SHERRIE'S AUCTION - Sherrie Thomson**  
 573-760-9901 • www.sherriesauctions.com

Terms: Cash Only Sales, \$100 Refundable Clean Out Deposit, 48 Hours Removal. Masks Ar Required!

**63 Motors**

31100 Hwy. 63 N. • Vienna, MO  
 Chris Feeler  
 573-422-6344 • Cell 573-690-0890

**JOHN DEERE 2940 TRACTOR:** MFWD, after-market cab heat, dual all QT loader, joystick, 7' bucket with grapple, 8000 hrs. 60%-70% rubber, runs out good. \$17,500. Call (573)881-3557.

**FESCUE SEED:** \$1.20 lb. \$60 per bag. Fescue/orchard grass mix, \$1.00 lb. \$40 per bag. Mix grass seed, 50¢ lb. \$25 bag. Clean, bagged, tested. Olean. (573)392-1115 or (573)280-1365.

**OLEAN LIVESTOCK MARKET, INC.**  
 LOCATED 3 MILES EAST OF ELDON, MO. - 1/4 MILE ON FF  
 Office 573-392-4138 • Fax 573-392-0224

**Sale Every Friday 12:00 NOON**  
 (SPECIAL SALES AS ADVERTISED)  
**EXCELLENT MARKET For All Stock & Feeder Cattle, Butcher Cows, Bulls**

Sale Barn 573-392-4138, Don Bledsoe 573-280-0743, Mark Atkinson 573-280-7920, Chris Bledsoe 573-280-0206, Cody Bledsoe 573-286-2979, Steve Dubbert 573-338-2060,  
 Locally Owned & Operated Livestock Market Serving Farmers & Cattlemen For Over 35 Years  
 View Our Website At www.imauctions.com

**APRIL 9, 2021**

STEERS		HEIFERS	
Up To 299 Lbs	\$173.95-\$207.00	Up To 299 Lbs	\$170.60-\$205.00
300-399 Lbs	\$182.50-\$199.00	300-399 Lbs	\$148.60-\$169.75
400-499 Lbs	\$169.50-\$184.00	400-499 Lbs	\$148.00-\$161.00
500-599 Lbs	\$150.85-\$173.00	500-599 Lbs	\$140.60-\$155.00
600-699 Lbs	\$144.95-\$168.00	600-699 Lbs	\$133.10-\$143.00
700-799 Lbs	\$138.50-\$143.25	700-799 Lbs	\$120.45-\$133.00
800-899 Lbs	\$126.10-\$135.25	800-899 Lbs	\$120.45-\$133.00
BULLS		BETTER WEIGH COWS	
Up To 299 Lbs	\$161.95-\$192.50		\$63.50-\$75.00
500-599 Lbs	\$137.05-\$149.50	BULLS	
600-699 Lbs	\$135.15-\$148.00		\$70.00-\$96.50

Short, Fat, Full Or Less Desirable Cattle Bring Less Than These Quotes.  
 We Have 38 Feed/Water Pens Available For Early Arrivals. We Have 4-5 Packer Buyers Present Every Week.

**BUFFALO LIVESTOCK MARKET LLC**  
 276 West Hwy 32 Buffalo, Mo 65622 • 417-345-8122

**SPECIAL STOCK COW & BULL SALE**  
 April 20 Tuesday Night 6:30 P.M.  
 Expecting 450-500 Cows & Bulls

**Brumgard Farm Dispersal:** 75 Blk & BWF Cows; 25 Calves By Side, 2 Reg. Angus Bulls, 5 Years Old; 15 Blk Heifers Exposed To Bulls

**R Green Farm Dispersal:** 18 Blk & Colored Cows 8 With Calves; Balance Bred To Balancer Bull; 1 Blk. Balancer Bull

**Broneski Farm:** 20 Purebred Charolis Heifer 750-800 Lb; 17 Red Brock \* Red Neck Hfns \$750-\$800; Open Heifers Ready To Breed

**Hass:** 6 Yellow Char Red Angus Cross Heifers With 6 Yellow WF Calves By Side

**Wassman:** 10 - Longhorn Cross Cows - Running Ages

**Bonebrake:** 6 Hereford Bred Cows

**JBM Farm:** 35 Black Cows, 5 Years Old Homeraised 10 Calves By Side, Balance Springers, Bred Angus Bulls

**ALL BULLS SEMEN AND TRICK TESTED:**  
 Bulls:  
**Bradley 18 Mon.:** 5 Registered Char Bulls, 1 Reg. Angus Bull  
**Johnson:** 1 Balancer Bull 2 Year  
**Bonebrake 14 Mon.:** 2 Hereford Bulls  
**D. Stewart 2 1/2 And 3 1/2 Year Old:** 2 Charolias Bulls

*For More Info Or To Consign Contact:*  
 Lyle Caselman 417-533-2944 Leon Caselman 417-588-6185

**STOCKTON AUCTION SERVICE**  
**Annual Spring Outdoor Auction**  
**Saturday, May 8th**  
 • 10:00AM Sharp!

**DIRECTIONS:** Conducted at Bland City Park ~ west side of Bland along Hwy. 28

**TOOLS ~ EQUIPMENT ~ GUNS ~ BOATS CARS ~ TRUCKS ~ ANYTHING OUTDOORS!**

Book and List Your Items NOW!

Call Roger for details:  
 cell 573-680-6799  
 home 573-646-3680

Your attendance is appreciated...  
 spread the word!

Qualified - Capable - Competitive

15% Commission with a \$400.00 top charge on any single item. \$10.00 fee on any "no sale" items.

**NO \$\$\$ DOWN MOBILE HOMES:** Call for details. (573)499-9993. columbiadis-counthomes.com

**WANTED:** Horses, saddles, tack, horse trailers. (314)808-4576 or (314)570-2639. K41TFN

**Callaway Livestock Center, Inc.**  
 Kingdom City, MO • 573-642-7486  
 Feeder cattle sale every Monday: 12:00 NOON.  
 Slaughter Steers & Heifers Sell First

**FEEDER SALE REPORT**  
 MONDAY, APRIL 12, 2021

Monday Receipts - 2718 Hd.  
 Lots of Good Quality Cattle in the Offering

1458 Steers: Med & Lg frame		1041 Heifers: Med & Lg frame	
Hd	Computer Avg - Top	Hd	Computer Avg - Top
13- 300 & Dn	165.00 - 212.50	6- 300 & Dn	149.00 - 195.00
72- 300 - 400	184.00 - 211.00	76- 300 - 400	157.00 - 178.00
311- 400 - 500	183.00 - 207.00	284- 400 - 500	148.00 - 165.00
453- 500 - 600	168.00 - 194.50	395- 500 - 600	147.00 - 162.50
223- 600 - 700	153.00 - 167.00	152- 600 - 700	137.00 - 149.00
183- 700 - 800	144.00 - 152.00	116- 700 - 800	138.00 - 143.00
168- 800 - 900	141.00 - 146.50	5- 800 - 900	115.00 - 132.00
29- 900 - 1000	126.00 - 132.00	- 900 - 1000	-

13 Bred Cows: 835.00 - 1200.00; 3 Pairs: 1308.00; 152 Slaughter Cows: High Dressing 66.00 - 74.00; Bulk 57.00 - 65.00; Low 50.00 - 53.50; Thin 40.00 & down; 24 Slaughter Bulls: 86.00 - 106.00

**SLAUGHTER CATTLE SALE**  
 All Slaughter Strs & Hfns Sold on Monday 12:00 NOON  
 Receipts - 24 Hd.

Steers & Hfns:	Top - 125.00
Choice 2 & 3	120.00 - 125.00
Mixed select	115.00 - 119.50
Holstein	76.00 - 90.00

Roger Temmen 573-680-4538 Jack Harrison 573-999-7197 John P. Harrison 573-220-1482 Claude Neimeyer 573-470-1017  
 Justin Oberling (217) 440-7724 Wayne McCluggage 573-473-6314 Glenn Stegman 573-619-8495  
 Market Report: 573-522-9244 24-hour Recording  
 Please visit our website www.callawaylivestock.com

Callaway Livestock • Kingdom City, MO • 573-642-7486  
 Big Feeder Cattle Sales every Monday at 12pm (noon)  
 Top Notch Replacement Cow Sales  
 1st Thursday of each month starting at 6:00 pm  
 We now offer two live Internet Systems:  
 DV Auction and Cattle USA

We have added 20,000 square feet of roof and more pens and can now house 3,000 under roof. This will now expand our capacity to 5,000 total.  
 Your yardage dollars at work. Our lot is very trucker friendly and we sit right off I-70, the Gateway to the West. Our team is looking forward to helping you market your cattle. Please call us for farm visits, trucking, and any of your marketing needs.

**Owner: Jack Harrison 573-999-7197**  
**Owner: John Harrison 573-220-1482**

Claude Niemeyer 573-470-1097	Roger Temmen 573-680-4538	Glenn Stegman 573-619-8495
Eastern MO Area	Westphalia Area	Jefferson City
Chad Nickelson 573-631-1627	Miles McWhorten 573-263-3759	Lynn Crouch 417-399-4148
Farming/Potosi Area	St. James, MO	Edgar Springs
Jarrod Simpson 573-247-0786	Justin Oberling 217-440-7724	Gary Freeman 573-291-1216
Salem, MO Area	Illinois	Lynn/Jeff. City



# Public Auction

18258 Beard Creek Lane, Barnett, MO 65011  
 From the junction of AA and 52 (in Barnett), take AA (north) 1.8 miles to Hwy. OO, turn right (east) on OO and continue 8/10 mile to Beard Creek Lane, turn left (north) go 9/10 mile to sale sight. Watch for auction signs.

**Saturday, Apr. 17, 2021 – 10 a.m.**



## Real Estate Sells @ 12 Noon

77.10 Acres m/l of improved pasture with cattle tight perimeter and cross fencing, 2 Wells and 1 pond stocked with fish. 1993 1,800 sq. ft. manufactured home with 3 bedrooms, 2 full baths, 2x6 walls with central heat and air, 16x10 enclosed front porch and 10x30 enclosed back porch. Concrete in-ground storm shelter. Buildings consist of a 40x60 metal shop building with electric and dirt floor, 40x80 pole barn, 20x36 open front building, 3 Cargill hog barns and a foundation for a fourth. Gravel road frontage along Beard Creek Lane. Call Mark Atkinson at 573-280-7920 for a property viewing. OPEN HOUSE: Saturday, April 3, 10 a.m.–12 p.m.

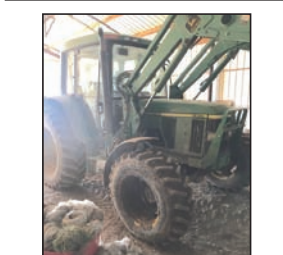
Terms: **The opening bid on the property will be \$6,400/acre.** Any bid at or above that amount and the property sells with no further reserve. We will require \$20,000 down on sale day, with the balance due at closing. Seller will provide and owner's title policy. Buyer is responsible for any lender's policy. 2021 taxes will be pro-rated at closing. The closing fee at the title company will be split 50/50.

## Hay & Irrigation Equipment

30 Bales of fescue 2020 crop, 5x5 net wrapped  
 20 Bales of fescue 2019 crop, 5x5 net wrapped  
 Ocmis irrigation hose reel & traveling gun  
 Several pieces of 6" aluminum ring lock irrigation pipe on trailer  
 Kifco irrigation pump, 1,000 rpm pto

### AUCTIONEERS NOTE:

Location! Location! Location!  
 Farms like this don't come up for sale very often. This is a very productive farm. Mr Comer ran 40 head of cows and cut 35 acres of hay annually. Have your finances in order, because any bid at or over \$6,400/acre and the property will sell absolute to the high bidder.  
 Any announcements made day of sale take precedence over all printed material. Not responsible for accidents.



## Tractors, UTV, Trailers & Equipment

JD 6400 tractor, cab, heat & AC, 4x4 w/JD 640 loader & bucket, 7,009 hours  
 JD 6310 tractor, cab, heat & AC, 4x4 w/JD 640 loader & bucket, 4,800 hours, new front tires  
 JD 6200 tractor, cab, heat & AC, 2wd w/JD 620 loader & bucket, 8,544 hours  
 JD 525 MOCO with impeller, used very little  
 2012 Cherokee aluminum gooseneck stock trailer, 6'6"x20"  
 1994 Kodiak gooseneck stock trailer, 6'x20'  
 Rissler chute w/automatic head gate  
 2 Small Rissler creep feeders  
 M-W 10' brush hog pull type  
 Front bale spike for JD loader  
 JD grain drill with grass seed boxes  
 Woods 8' 3pt blade H-S 8wheel bifold rake  
 Polaris 570XP side-by-side, glass windshield, hard roof, soft doors w/heat and a new drive belt, 1,642 hours  
 International truck, 12' bed & hoist, runs, not title



## Automotive & Lawn Mowers

2015 Honda CRV, leather interior, full power, 175,000 highway miles. All recommended services have been performed by Honda dealership  
 1999 Chevy Silverado 1500 ext. cab, 4x4, auto transmission  
 Cub Cadet LGT 1050 lawn tractor, 50" deck, 25HP Kohler engine  
 Cub Cadet zero-turn mower, 50" deck, 23HP Kawasaki engine  
 Yard Machine rear tire tiller

## Tool & Misc.

3,200 Psi power washer w/Honda 11HP engine  
 Coleman air compressor  
 2 New 9' garage doors (never assembled)  
 Battery charger  
 All kinds of misc. hand tools  
 Garden tools, shovels, rakes  
 Pile of electric motors for scrap  
 Chain link dog pen  
 Large pile of power poles

## Household

Dining table & chairs; Couch & loveseat  
 Vinyl couch and loveseat  
 Full size bed; 4-Piece bedroom set  
 China hutch; Oak hutch  
 Oak TV stand; 6-Drawer dresser  
 (2) Blonde 4-drawer dressers  
 Kenmore refrigerator  
 Amana dryer (like new)  
 Maytag washer; Lift chair  
 Rascal scooter (like new)  
 Pronto scooter; Hospital bed

Concessions available



**10' 3 PT. HITCH ROAD GRADER:** Heavy Steel, New Piston, Hoses Old But Not Leaking.  
 Call (573)216-8444. Macks Creek, Mo C15

**JOHN DEERE 2940 TRACTOR:** MFWD, after-market cab heat, dual all QT loader, joystick, 7' bucket with grapple, 8000 hrs. 60%-70% rubber, runs out good. \$17,500. Call (573)881-3557.  
**FOR SALE:** New cottage cabin. 1 or 2 bedroom, 1 bath, kitchen, living room, in private senior park like setting. Owners only, close to lake and marina and groceries. Call Ray for details (573)346-3030.

# Salem Metals

We've Got You Covered!

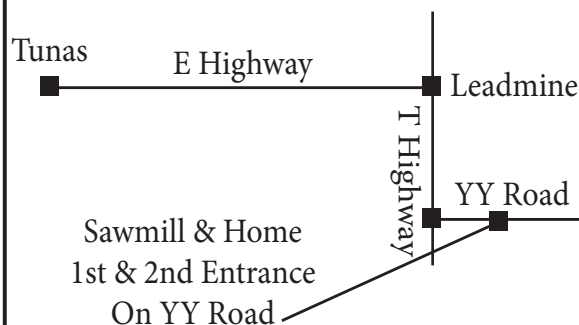
**WHERE QUALITY AND SERVICE MEET!**

Custom Length Metal Roofing & Siding, Trim, Entry Doors, Windows, Sliding Door Hardware, Bubble Insulation & Roofing Underlayments



9082 W Hwy 32 Salem, Mo - 573-729-6000  
 salemmetal@ibifax.com/www.salemmetals.com

- Rough Sawn Oak  
 80¢ Per Board Foot  
 - Kiln Drying Available  
 - Custom Molding & Log Siding, Trim, Paneling Or Wainscot Oak, Ash, Hickory, Sycamore, Cherry  
 Or Bring Your Own Logs



## Owners: Comer Farms

**Auction**  
**Mark Atkinson** **Atkinson** **573-280-7920**  
**Service**

Not responsible for accidents. All announcements made day of sale take precedence over all printed material.  
 Terms: Cash or check with proper ID.

The Index, HERMITAGE, MISSOURI 65668

**BARON'S GUNSMITHING:** Fast professional repairs. Old/new firearms. (573)363-5801. Camdenton.

**FOR SALE:** Motorcycle Accessories, Leather Saddle Bags, \$150. Front Finder For Harley Softtail. Voyager Trike Kit Fits Harley Or Suzuki, \$1,100, All Hardware Included. 573-259-6915 or 573-259-6907.

**DODGE LARAMIE:** 2210, Diesel, 4 dr., 90,600 miles, \$30,500; International 4300 DT 466 Diesel, 10' dump bed, saddle tanks, 172,000 miles, \$30,000. (573)437-2886, (417)437-6464. Owensville.

**AD TRACKER FAX**  
**573-736-5691**

**TUFFY SPECIAL:** Volume prices. (573)657-2176. amegamobilehome.com

**25 HEAD HEIFERS:** Some bred, \$1000 each. (573)437-3590.

**JOHN DEERE 4020 D TRACTOR:** 1970 one owner, with JD 148 loader, good sheet metal, poor paint, 10,000 hrs. \$14,500. Call (573)881-3557.  
**FOR SALE:** 10,000 Lb Fifth wheel hitch with all of the hardware, \$300. Small table saw, 16" portable. \$75.00. (573)480-3538.



**JOHN DEERE 4450 TRACTOR:** MFWD, Power Shift, 6700 Hours, Factory Duals, Triple Hydr, Loader Available. \$45,000. Call (573)881-3557. **B14**

# RAY'S Lawn Service

"Commercial & Residential"  
**LAWNS**

Full Coverage Insurance

Call For Free Estimate!

Serving Texas, Laclede, Pulaski & Miller County

**GARRETT RAY, owner**  
**573-552-2535**







# BULLS AVAILABLE NOW!



**Owners:**  
Travis and Naomi McGee  
573-489-3311

at the farm in Bay, MO

Location: 2210 Brown Shanty Rd, Bay MO 65041  
From Hwy 50 take Hwy K North to the town of Bay.  
Go East on Hwy W to the first gravel road on the left.  
Head North on Brown Shanty Rd until you come to the  
THM Land and Cattle sign on your right.



## 18 Month Bulls

Tag	DOB	Name	ET	Sire	MGS	Act. BW	BEPD	Adj. WW	WWR	WEPD	YEPD	SC	DOC	Milk	CW	Marb	RE	SM	SB	SC
925	08-31-2019	THM Top Ten 925		2S Top Ten	#Musgrave Aviator	62	-2.0	671	105	+69	+122	+4.2	+24	+31	+38	+5.3	+7.1	+75	+127	+240
926	09-01-2019	THM Mile High 926		*Spur Kansas 5555	*Fveys Opportunity 148A	62	+2.5	N/A	N/A	+75	+133	+1.25	+17	+35	+78	+3.4	+8.2	+60	+166	+275
931	09-03-2019	THM Monumental 931		*EXAR Monumental 6056B	*Basin Advance 3134	68	-.9	672	100	+65	+118	+1.68	+8	+30	+56	+1.03	+5.6	+35	+159	+241
934	09-06-2019	THM Game Changer 934		*Gaffney Game Changer 371	*SS All in 4914	62	-.9	716	100	+50	+99	-.58	+6	+35	+36	+7.2	+7.4	+46	+146	+235
936	09-07-2019	THM 38 Speical 936		*Baldridge 38 Special	*SS Trump B263	78	+1.9	669	95	+75	+129	+1.80	+19	+21	+45	+1.75	+4.4	+53	+131	+223
937	09-09-2019	THM Cowboy Up 937		*HA Cowboy Up 5405	Mr JT Oahe Dam 014	78	+0	601	94	+56	+106	+7.5	+14	+25	+34	+2.5	+3.2	+35	+107	+174
939	09-12-2019	THM Payweight 939		*Basin Payweight 1682	*FHCC Absolute 4101	78	+9	743	105	+83	+144	+1.13	+18	+33	+75	+7.0	+3.0	+59	+157	+263
946	09-18-2019	THM Cowboy Up 946		*HA Cowboy Up 5405	*SS Cowboy X504	82	+1.5	617	96	+59	+110	+6.7	+25	+17	+28	+2.6	+3.9	+42	+98	+169
949	09-21-2019	THM Southern Charm 949	Yes	*BUBS Southern Charm AA31	*Connealy Black Granite	88	+1.8	577	100	+66	+112	+1.08	+13	+28	+47	+5.6	+8.0	+67	+137	+245
951	09-23-2019	THM Southern Charm 951	Yes	*BUBS Southern Charm AA31	*Connealy Black Granite	78	+0	681	100	+71	+124	+1.69	+25	+29	+45	+8.0	+5.4	+77	+143	+262
972	10-09-2019	THM Southern Charm 972	Yes	*BUBS Southern Charm AA31	*Connealy Black Granite	83	+2.9	617	100	+77	+135	+6.9	+15	+33	+65	+7.3	+1.11	+73	+171	+295
974	10-10-2019	THM Jet Black 974	Yes	*Bar R Jet Black 5063	*KCF Bennett Southside	74	-.8	646	100	+61	+101	+1.68	+24	+16	+40	+6.1	+7.3	+53	+128	+219
975	10-11-2019	THM Payweight 975		*SS Payweight D4412	*Connealy Final Product	73	-.3	613	95	+53	+100	+8.6	+18	+26	+32	+1.04	+5.3	+53	+144	+240
976	10-12-2019	THM Southern Charm 976	Yes	*BUBS Southern Charm AA31	*Connealy Black Granite	78	+1.0	724	100	+67	+117	+9.5	+19	+33	+50	+8.7	+1.06	+92	+158	+297
986	10-30-2019	THM Rita Payweight 986		*SS Payweight D4412	*CoX SS Compliance Z17T	70	-1.6	661	103	+52	+106	+1.5	+28	+28	+30	+1.06	+3.8	+70	+136	+246
993	11-07-2019	THM Payweight 993		*SS Payweight D4412	*Deer Valley All In	80	+2.9	691	108	+72	+127	+1.05	+18	+21	+52	+3.2	+5.4	+54	+128	+220
999	11-20-2019	THM Top Ten 999		2S Top Ten	**Gaffney Game Changer 371	79	+1.4	690	100	+72	+131	+1.35	+20	+24	+54	+1.39	+1.83	+52	+157	+256

## Yearling Bulls

Tag	DOB	Name	ET	Sire	MGS	Act. BW	BEPD	Adj. WW	WWR	WEPD	YEPD	SC	DOC	Milk	CW	Marb	RE	SM	SB	SC
9103	12-05-2019	THM Top Ten 9103		2S Top Ten	THM Upward 319	71	+6	657	95	+73	+125	+3.7	+18	+19	+54	+4.7	+7.8	+53	+143	+238
9107	08-10-2019	Bar 7 Lucy 9107		*BUBS Southern Charm AA31	*VAR Reserve 1111	75	+3.2	N/A	N/A	+70	+119	+1.01	+16	+27	+47	+5.9	+9.0	+85	+143	+270
03	01-24-2020	THM Henrietta Alternative 03		*Baldridge Alternative E125	**MGR Treasure	63	-2.5	687	97	+62	+119	+5.8	+20	+27	+48	+1.08	+8.8	+49	+170	+269
06	01-29-2020	THM Weigh Up 06		RAF Weigh Up 653	*SS Objective T510 0T26	74	+7	727	99	+62	+109	+1.2	+19	+20	+46	+9.3	+5.6	+69	+163	+280
07	01-30-2020	THM Ashland 386-07	Yes	*GAR Ashland	*RB Tour Of Duty 177	82	+1.5	696	100	+89	+155	-.02	+26	+19	+73	+7.2	+1.02	+58	+180	+291
08	01-30-2020	THM Cowboy Up 510-08	Yes	*HA Cowboy Up 5405	*SS Objective T510 0T26	68	-1.1	692	100	+61	+105	+1.53	+11	+20	+19	+3.6	+3.7	+48	+89	+163
011	02-02-2020	THM Cowboy Up 011		*HA Cowboy Up 5405	*Basin Payweight 1682	89	+1.7	735	104	+79	+137	+1.22	+4	+23	+50	+3.1	+6.3	+50	+127	+215
012	02-03-2020	THM Cowboy Up 012	Yes	*HA Cowboy Up 5405	*SS Objective T510 0T26	85	+0	601	100	+63	+105	+8.5	+4	+14	+27	+7.1	+3.8	+32	+123	+192
013	02-03-2020	THM Weigh Up 013		RAF Weigh Up 653	*McKellar Investment 5236	62	-1.7	740	101	+58	+106	+6.4	+25	+34	+51	+8.6	+3.3	+58	+156	+260
014	02-05-2020	THM Top Ten 014		2S Top Ten	*McKellar Legend 3320	84	+2.0	695	106	+79	+141	+3.9	+24	+23	+62	+4.7	+4.8	+52	+146	+241
018	02-20-2020	THM Weigh Up 018		RAF Weigh Up 653	*PVA Call of Duty 4159	86	+0	812	114	+62	+107	+2.0	+18	+34	+42	+4.9	+8.0	+77	+123	+237
028	03-02-2020	THM Trump Train 386-028		*SS Trump B263	*RB Tour Of Duty 177	79	+3.8	613	94	+93	+153	+5.5	+16	+23	+54	+5.1	+8.7	+51	+131	+221
029	03-04-2020	THM Jet Black 029		*Bar R Jet Black 5063	*AAR Ten X 7008 SA	72	-.2	607	85	+69	+130	+7.6	+18	+28	+60	+8.2	+6.2	+55	+173	+279
032	03-17-2020	THM Top Ten 032		2S Top Ten	RB Sterling 850-2850	80	-1.0	638	100	+62	+109	+5.8	+18	+26	+43	+5.1	+7.9	+49	+135	+224

Videos Online [www.thmcattle.com](http://www.thmcattle.com)



**FOR SALE:** 3 Bedroom, Double Storage, Farm House, Under Remodel, 10+ Acres, Year Round Spring, \$175,000, Price Will Go Up When Finished.  
573-433-1241 Dixon, MO B-11

**AUSTRALIAN SHEPHERD PUPPIES FOR SALE OR TRADE:** Born Feb. 18th, shots, wormed, tri's and merles. Call (417)458-1047 or (417)967-6493.

**QUALITY REPLACEMENT COWS:** cow calf pairs bred heifers and breeding bulls, butchering calves. Trucking available. (660)619-5190.



## 2008 Keifer Lite

3 Horse Trailer, Well Maintained, Kept Inside, Sleeping Quarters



1-44 • Exit 218 Bourbon, Missouri

314-614-6470 573-732-5100

We're just a short drive from high prices!

Ask For Matt (Sales Manager) [www.bourbonrv.com](http://www.bourbonrv.com)

**MAY LOGGING:** We buy standing timber. (573)247-9710.

**BUYING STANDING TIMBER:** Chris Smith Logging. (573)762-2850.

**FOR SALE:** 8 hereford heifers, 14 months, open. (573)728-6970. Argyle.

**WILL BUY Vintage Sports Cards:** Baseball, Basketball, Football. 573-680-1170.

# Harrow Deals



### Drag Harrows

- 4ft.....\$395
- 6ft.....\$599
- 8ft.....\$795
- 12ft.....\$1,125
- 14ft.....\$1,299

1/2 tines price includes bar and chain



### Cart Harrow

- 16ft.....\$4,950
- 20ft.....\$6,250

# TYM TRACTOR Package Deals



### T474H Cab

Sale Price \$26,900  
18ft trailer, 6ft cutter, 6ft utility blade, 48 hp, 4wd, Hydrostat Transmission, Quick attach loader and skid steer bucket, Cab with ac, heat and radio

Package Price: \$31,200



### T474 Cab

Sale Price \$26,250  
48 hp, 4wd, Shuttle Shift Transmission, Quick Attach Loader and Skid Steer Bucket, Cab with AC, Heat and Radio

Package Price: \$30,550



### T474H

Sale Price \$21,500  
48 hp, 4wd, Hydrostat Transmission, Quick Attach Loader and Skid Steer bucket

Package Price: \$25,800



### T264H

Sale Price \$14,950  
26 HP, 4wd, Hydrostat Transmission, Quick Attach Loader, Foldable ROPS.

Package Price: \$17,750

## DIAMOND EQUIPMENT

4 MILES SOUTH OF WESTPHALIA ON HWY. 63 • (573) 455-2617  
[WWW.DIAMONDEQUIPMENT.COM](http://WWW.DIAMONDEQUIPMENT.COM) • [SALES@DIAMONDEQUIPMENT.COM](mailto:SALES@DIAMONDEQUIPMENT.COM)

**WANTED TO BUY:** Standing timber. Call GARRIOT'S LOGGING, serving Mid-Mo. over 30 years. (573)220-1907 or (573)290-0527. [garrillotg.com](http://garrillotg.com). Fulton.

**BULLS FOR LEASE:** Over 70 registered Angus & Hereford to choose from. 90 day lease \$900. Trucking available for extra charge. (573)999-3197, Kingdom City, MO.

**BUYING & SELLING:** Used mobile homes, move and set-up available. For inventory or to sell your home call (636)583-8686 or visit [www.eastcentralmoilhomes.com](http://www.eastcentralmoilhomes.com)

**COMMERCIAL TRUCK INSURANCE:** Competitive Rates, specializing in long haul, dump trucks, log trucks and delivery. Call 800-216-3377 for professional service.



**FORD 1938 PICKUP:** Shorted, V8, 3-speed, Rust free, No dents, no bondo, 100% complete, not running. \$7,950. (573)636-8000 JC.

**TONGUE AND GROOVE CAR SIDING:** Pine, Western Cedar and Red Cedar. www.pineridgerustic.com. (573)729-7226. Salem

**PACKARD 1950:** 4 Door, Deluxe, excellent paint and interior, sharp, 8 Cylinder, 3-Speed, overdrive. \$13,900. (573)636-8000. Jefferson City.

**FOR SALE:** Church pews, color honey oak, good condition, 10' 1/2" Long. If interested call (314)240-3096. Licking, Mo.

# Room for Summer Fun!



Weekend Cabins



ATV and boat storage

800.688.2064



jamcobuilders.com



SEYMOUR, MO

## Now In Stock!!

**Candy, Texas Super Sweet**  
1015Y, Granex Yellow, Granex White, Walla Walla, Red Candy Apple, & Copra Sweet Onion Plants

- Bareroot Strawberry Plants
- Junebearing Varieties
  - Honeoye
  - Earliglo
- Everbearing Varieties
  - Seascape

---

**MORGAN COUNTY SEEDS LLC**  
18761 Kelsay Rd. Barnett, MO 65011  
573-378-2655 www.morgancountyseeds.com  
OPEN: Monday Thru Saturday • 8am-5pm  
Fridays Open Until 6:00 PM  
From Versailles, Take Hwy 52 East To Hwy C East To Kelsay Rd. 1.3 Miles North On Kelsay Rd. Or 1 Mile Past Dutch Country Store.

**JOHN DEERE 4400 Diesel Combine:** ACE Lots Of New Belts And Bearings, New Clutch, Almost New 23.1x26 Drive Tires, 3,000 Hrs, \$3,000. 314-712-1358.

**FOR SALE:** Cows, calving now. 75 blk/blk w/f, 5 to SS. 40 Charolais cross cows, 3-7 years, cows are gentle and big. (660)537-6247 or (660)838-6247.



**GREAT SELECTION OF 40,50 & 55 SERIES ROW CROP JOHN DEERE TRACTORS:** All processed through shop, field ready, loaders available, priced to sell. Call (573)881-3557. B14

**NO \$\$\$ DOWN MOBILE HOMES:** Call for details. (573)499-9993. columbiadis-counthomes.com

**HAPPINESS IS NOT A STATION YOU ARRIVE AT, BUT A MANNER OF TRAVELING**

**WANTED: OUTBOARD motor with prop, 50 h.p.-70 h.p. with controls. (573)480-7524.**

**BUY-SELL-TRADE: AD TRACKER**  
Crocker, MO. P.O. Box 37, Crocker, MO. 65452



## Selling 48 Charolais Bulls

24 Fall Coming Two-Year-Olds & 24 Spring Yearlings

# Annual BULL SALE

April 24, 2021 1 p.m. Saturday

Interstate Regional Stockyards Cuba, Missouri



**LOT 2**

**WIA RESOURCE G61**  
9/2/2019 SIRE: CCC WC RESOURCE 417 P  
BW: 87 lbs ADJ.WW: 695 lbs M948502



**LOT 4**

**WIA MR MUSTANG G75 P**  
9/12/2019 SIRE: TR MR DIABLO 2742Z ET  
BW: 72 lbs ADJ.WW: 687 lbs M948880



**LOT 12**

**WIA MR COME EASY G901 P**  
9/20/2019 SIRE: WR FOREMAN D602  
BW: 71 lbs ADJ.WW: 694 lbs M948532



**LOT 13**

**WIA FIRE AWAY G80 P ET**  
9/20/2019 SIRE: ACE-ORR LOCK N LOAD  
BW: 88 lbs ADJ.WW: 736 lbs EM948511



**LOT 8**

**WIA EASY SLEEPER G83 P TW**  
9/12/2019 SIRE: WR FOREMAN D602  
BW: 69 lbs ADJ.WW: 722 lbs M948512

BID & BUY ONLINE



Broadcasting Real-Time Auctions



**Sale Manager: Greg Hubert**  
P.O. Box 100 • Oakley, KS 67748  
785-672-3195 (office)  
785-672-7449 (cell)  
greghubert@st-tel.net



Mike & Sara Kisner  
Connor & Cannon  
5805 Perkins Rd. • De Soto, MO 63020  
(636) 236-0306 cell  
wildindianacres@yahoo.com



**HORSE QUALITY BROME SQUARE BALES:** WEHMEIER ANGUS: TUFFY SPECIAL: Volume Yearling Angus bulls. Call prices. (573)657-2176. \$5.50/bale. (573)808-6382. (573)578-7434. amegamobilehome.com

# ZCM TIMBER HARVESTING

## 573-569-0592

**Buying standing timber**



Whether you are buying or selling, the Ad Tracker will work for you!

**DREAM HOUSE:** Online, chateauhomes.net. Call Marla (573)657-7040.

**14 COWS:** Black bull, 10 calves, \$18,750 all 25 head. (573)437-3590.

**USED EQUIPMENT** Eldon = EL Jefferson City = JC See Complete Listing At [www.crown-power.com](http://www.crown-power.com)

# CROWN

## Power & Equipment

Serving You In 10 Locations

3369 Hwy 52 W. Eldon, Mo  
573-392-0230

SALES: (Ag) Gene Klein  
And (Ce) Chris Scott

### HAY/MISC.

New Holland H7550 Disc Bine 13' Flail Center Pivot.....\$16,500.00 EL

Vermeer 505 Super M Net/Twine .....\$12,500.00 EL

Agco 5556 Baler, Net 10K...\$9,900.00 EL

### TRACTORS

Case IH Maxxum 135, 4Wd, Loader.....\$89,100.00 EL

Case IH Tractor 495 W/ Belly Sickle Mower.....\$5,995.00 EL

Massey Ferguson 4253 Cab, 2WD, Loader .....\$22,500.00 EL

IH 1086 Cab .....\$11,550.00 EL

Allis Chalmers 7000, Cab ....\$8,690.00 EL

Ford 1710 w/Loader, 4WD...\$7,150.00 EL

Massey Ferguson 245 Diesel .....\$6,300.00 EL

Ford 3600 Diesel .....\$5,450.00 EL

### CONSTRUCTION

Kubota SVL95 Cab, Air, 750 Hrs .....\$53,900.00 EL

3621 Rockport Hills Rd. Jefferson City, MO  
573-636-5281

And (Ce) Joe Helming  
SALES: (Ag) Clint Kohlmeier

# CONSTRUCTION

90837 Case 580 Super M .....\$32,450.00 JC

70707 Kubota SVL95-2SHC .....\$63,800.00 JC

52650 Case 580SN Backhoe...\$60,500.00 JC

# CASE II

## AGRICULTURE

[www.crown-power.com](http://www.crown-power.com)

# SPARTAN MOWERS

SPARTANMOWERS.COM



**KG PRO - 54"**  
Spartan Stand On  
Kawasaki Engine,  
\$7,999



**RZHD61 - Kawasaki**  
Engine, 61" Fabricated Deck,  
Large Rear Tires,  
\$6,250  
Approx. \$127/Month Plus Taxes



**SRT PRO 61 - 27HP**  
Briggs Engine, 61" Fabri-  
cated Deck, 360 Plate, Very  
Comfortable Seat, \$6,799,  
Approx. \$155/Month Plus Taxes



**RZ54 - 25 HP Briggs**  
Engine, 54" Fabricated Deck,  
\$4,499  
Approx. \$93/Month Plus Taxes.



**RT PRO 61 - 27 HP Briggs**  
Engine, 61" Fabricated Deck,  
Rear Radial Tires, \$6,499 Or  
Approx. \$127/Month Plus Taxes



**RTHD72 - 27 HP Kawasaki**  
Engine, 7 Gauge 72" Fabri-  
cated Deck, Rear Radial Tires,  
Suspension Seat, 360 Plate,  
\$8,999 Or Approx. \$184/Month

# DIAMOND R EQUIPMENT

Just 6 Miles North Of Freeburg On Hwy 63 • 573-455-2617  
19677 N. Outer Road Higginsville, MO • 660-584-8757  
[www.diamondequipment.com](http://www.diamondequipment.com)

**FOR SALE:** 1980 SA200 Lin-  
coln Welder, Leads And Trail-  
er Included. 573-690-0669.

**DREAM HOUSE:** Online,  
chateauhomes.net. Call Marla  
(573)657-7040.

**JOHN DEERE 709 BRUSH**  
**HOG:** New clutch, no welds,  
\$1750. Call (573)881-3557.

## MAIL IN THIS COUPON

Mail To:

**Ad Tracker**  
P.O. Box 37  
Crocker, Mo. 65452

Name \_\_\_\_\_  
Address \_\_\_\_\_  
City \_\_\_\_\_  
State \_\_\_\_\_ Zip \_\_\_\_\_

**Classified Line Ads Are - 50c Per Word**  
**Picture Classified Black & White - \$35**  
**Picture Classified With Color - \$538**

**Office**  
**573-736-2226**

Fax Line (Only) - 573-736-5691

[www.adtrackermo.com](http://www.adtrackermo.com)

Each Phone Number Counts 1 Word - City 1 Word  
For Sale 2 Words - And Any Other Number Or Word  
Regardless Of Size, Counts As 1 Word.

Classified Ads Must Be Paid Before Printing.

**Please Print.** Use Additional Paper If Needed

No. of words \_\_\_\_\_ Telephone No. \_\_\_\_\_

**Be Sure Your Check, Cash, Money Order Or Credit Card # Is Enclosed.**

Check # \_\_\_\_\_  Cash \_\_\_\_\_  Money Order \_\_\_\_\_

VISA  MasterCard # \_\_\_\_\_ Exp. Date \_\_\_\_/\_\_\_\_/\_\_\_\_

AMERICAN EXPRESS  DISCOVER NETWORK Three Digit CVC On Back Of Credit Card # \_\_\_\_\_

**CLASSIFIED DEADLINE:** 3 P.M. Tuesday afternoon.  
Your ad will be in the following issue if it is received  
after 3 P.M. Tuesday.

Classified Ads Must Be Paid Before Printing.

**DISPLAY DEADLINE:** Monday at 12 Noon

\$20.00 Service Charge For All Returned Checks  
\$2.00 Min. Charge For Billing. Postage & Handling

### Ad Tracker

**PO Box 37 Crocker Mo 65452**  
Office Hours: 8 a.m. - 5 p.m.  
Monday-Friday

Contents of this issue do not constitute an endorsement by the  
Ad Tracker or Ad Tracker employees. Department of Army or  
Fort Leonard Wood. All products, ads or services are open to the  
general public without regard to race, religion, sex or nationality.



# Hilkemeyers Honda, Inc

573-744-5245 • Hwy. 63 South, Freeburg, MO

## 2021 Honda CBR 650 RX



- \* Seat At 31.9"
- \* 6 Speed Transmission
- \* Liquid Cooled 4 Cylinder

## 2021 Honda Monkey 125\*



- \* 4 Speed
- \* Seat At 30.6"
- \* Fuel Injection

## 2017 Honda Rebel 500\*



- \* 24" Seat Height
- \* 6 Speed Transmission
- \* Liquid Cooled Twin Cylinder

## 2020 Honda VT 1300C Fury



- \* Seat At 26.9"
- \* 5 Speed Shaft Drive
- \* Liquid Cooled V-Twin

## 2021 Honda CRF50F



- \* 3 Speed Automatic
- \* 21.6 Seat Height
- \* 111 Lbs

## 2021 Honda CRF125F



- \* Electric Start
- \* 4-Speed
- \* 34.9" Seat Height

## Big Wheel

For Optimum Safety And Performance Read The Owner Manual.



# HONDA Outboard

2019 Honda BF 60/40 Jet a/Control Box & Cables

**\$7,999**

Offer Ends April 30, 2021

2016 - BF 25 Tiller .....	\$4,250
*2020 - BF 50.....	\$7,580
2021 BF 10.....	\$2,750
* 2021 BF 50.....	\$7,899
2021 BF 10- Electric Start.....	\$2,985
2021 BF 15- Electric Start.....	\$3,350

\* With Control Box & Cables

# HONDA TRX



Offer Ends April 30, 2021



## 2020 HONDA TRX680 RINCÓN

3-Speed Automatic,  
Independent Suspension,  
1 Only

## 2021 HONDA TRX90K

4-Speed Automatic,  
Electric Start,  
26" Seat Height

<b>GUNS FOR SALE!</b>	Remington 700 Classic 8 MM Mauser.....	\$1,199
	Remington 700 Classic 300 Savage.....	\$1,199
	Remington 700 Classic 338 Mag.....	\$1,199
	Remington 700 Classic 7 MM Weatherby.....	\$1,399
	Remington 700 Classic 7 MM Mauser.....	\$1,199
	Ruger Wrangler 22 LR.....	\$210
	16 Foot Canoe.....	\$495
	Remington Nylon 66 22 L.R.....	\$379
	Remington Mohawk 10C 22 L.R.....	\$595
	Winchester 490 22 L.R.....	\$695
	Remington 700 VTR 223 Cal.....	\$995
	Remington 700 ADL 7 Mag.....	\$745
	Remington 700 Laminated 7M 08.....	\$1395
Colt 1911 MK IV Officers 45.....	\$995	
Remington Nylon 66 22 L.R.....	\$595	

# FREEBURG HARDWOOD PRODUCTS, CO.

## Metal Fabrication Shop

- Storage Sheds • Chicken Houses • Feed Bunks
- Well House • Mineral Feeders • Deer Hunting Stands

573-744-5236 Or 573-690-6808

Hwy. 63 South • Freeburg, MO [www.freeburghardwoodproducts.com](http://www.freeburghardwoodproducts.com)

Can Be Custom Built To Fit Your Needs

